

Product datasheet for **TA387971M**

RABGAP1L Rabbit Polyclonal Antibody

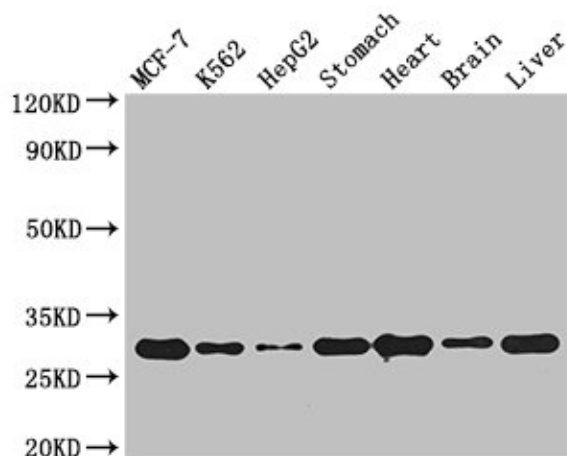
Product data:

Product Type:	Primary Antibodies
Applications:	IHC, WB
Recommended Dilution:	Recommended dilution: WB:1:2000-1:10000, IHC:1:20-1:200
Reactivity:	Mouse, Human
Host:	Rabbit
Isotype:	IgG
Clonality:	Polyclonal
Immunogen:	Recombinant Human Rab GTPase-activating protein 1-like, isoform 10 protein (11-262AA)
Formulation:	Preservative: 0.03% Proclin 300 Constituents: 50% Glycerol, 0.01M PBS, PH 7.4
Concentration:	lot specific
Purification:	>95%, Protein G purified
Conjugation:	Unconjugated
Storage:	Upon receipt, store at -20°C or -80°C. Avoid repeated freeze.
Stability:	1 year from dispatch.
Database Link:	<u>B7ZAP0</u>



[View online »](#)

Product images:



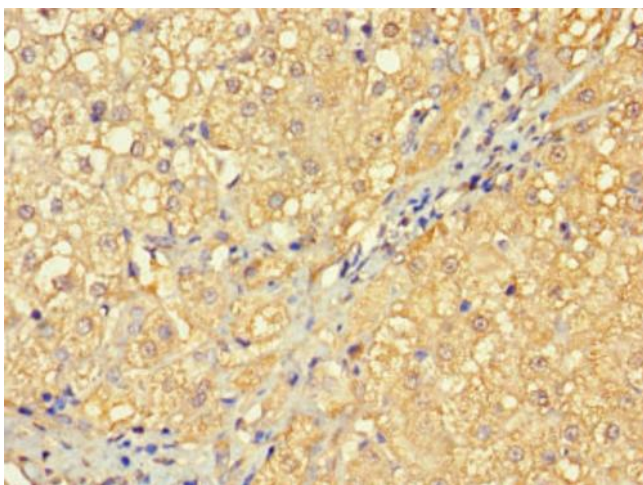
Western Blot

Positive WB detected in: MCF-7 whole cell lysate, K562 whole cell lysate, HepG2 whole cell lysate, Mouse stomach tissue, Mouse heart tissue, Mouse brain tissue, Mouse liver tissue
All lanes: RABGAP1L antibody at 3µg/ml

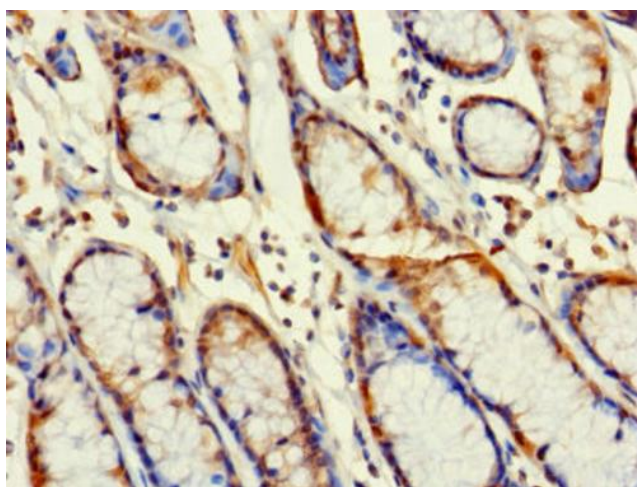
Secondary

Goat polyclonal to rabbit IgG at 1/50000 dilution
Predicted band size: 30, 93, 69, 95, 91, 44, 42, 43, 9 kDa

Observed band size: 30 kDa



Immunohistochemistry of paraffin-embedded human liver cancer using [TA387971] at dilution of 1:100



Immunohistochemistry of paraffin-embedded human gastric cancer using [TA387971] at dilution of 1:100