

Product datasheet for **TA387964**

SCIN Rabbit Polyclonal Antibody

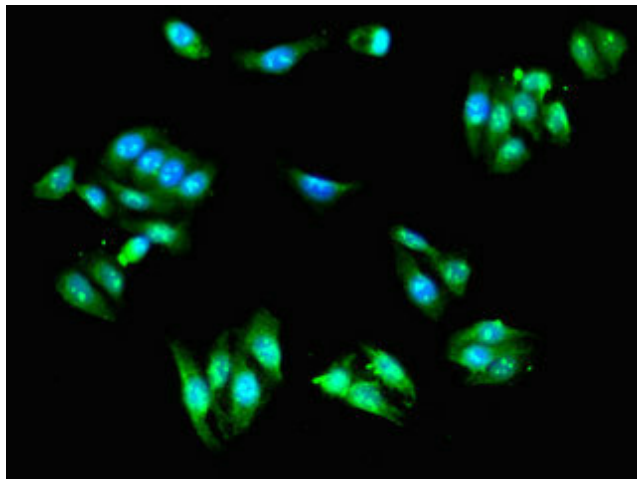
Product data:

| | |
|-----------------------|---|
| Product Type: | Primary Antibodies |
| Applications: | IF, WB |
| Recommended Dilution: | Recommended dilution: WB:1:1000-1:5000, IF:1:50-1:500 |
| Reactivity: | Mouse, Human |
| Host: | Rabbit |
| Isotype: | IgG |
| Clonality: | Polyclonal |
| Immunogen: | Recombinant Human Adseverin protein (556-703AA) |
| Formulation: | Preservative: 0.03% Proclin 300 Constituents: 50% Glycerol, 0.01M PBS, PH 7.4 |
| Concentration: | lot specific |
| Purification: | >95%, Protein G purified |
| Conjugation: | Unconjugated |
| Storage: | Upon receipt, store at -20°C or -80°C. Avoid repeated freeze. |
| Stability: | 1 year from dispatch. |
| Database Link: | Q9Y6U3 |
| Background: | Ca(2+)-dependent actin filament-severing protein that is presumed to have a regulatory function in exocytosis by affecting the organization of the microfilament network underneath the plasma membrane. In vitro, also has barbed end capping and nucleating activities in the presence of Ca(2+). Regulates chondrocyte proliferation and differentiation. MAP kinases p38 and ERK1/2 mediate the adseverin-induced accelerated differentiation of non-hypertrophic chondrocytes (By similarity). |

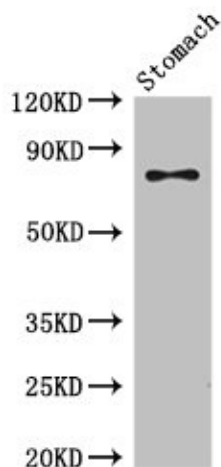


[View online »](#)

Product images:



Immunofluorescent analysis of HepG2 cells using TA387964 at dilution of 1:100 and Alexa Fluor 488-conjugated AffiniPure Goat Anti-Rabbit IgG(H+L)



Western Blot
Positive WB detected in: Mouse stomach tissue
All lanes: SCIN antibody at 3.5µg/ml
Secondary
Goat polyclonal to rabbit IgG at 1/50000 dilution
Predicted band size: 81, 66, 53 kDa
Observed band size: 81 kDa