

Product datasheet for **TA387959M**

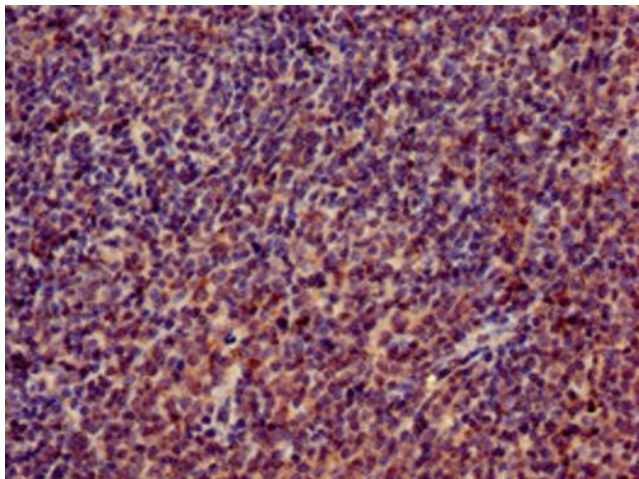
RPL4 Rabbit Polyclonal Antibody

Product data:

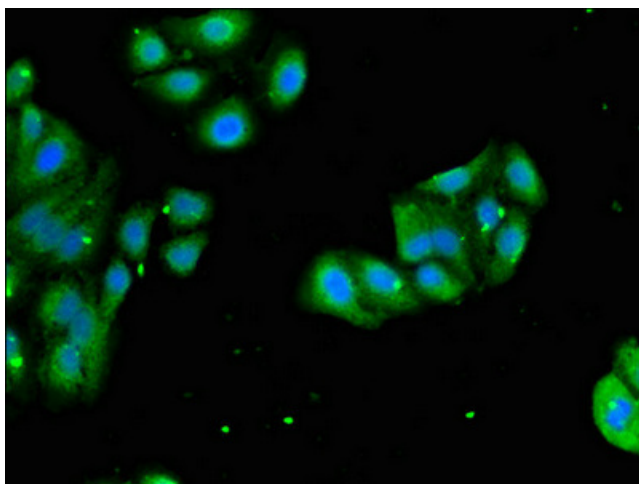
Product Type:	Primary Antibodies
Applications:	IF, IHC, WB
Recommended Dilution:	Recommended dilution: WB:1:500-1:5000, IHC:1:20-1:200, IF:1:50-1:200
Reactivity:	Human
Host:	Rabbit
Isotype:	IgG
Clonality:	Polyclonal
Immunogen:	Recombinant Human 60S ribosomal protein L4 protein (12-91AA)
Formulation:	Preservative: 0.03% Proclin 300 Constituents: 50% Glycerol, 0.01M PBS, pH 7.4
Concentration:	lot specific
Purification:	>95%, Protein G purified
Conjugation:	Unconjugated
Storage:	Upon receipt, store at -20°C or -80°C. Avoid repeated freeze.
Stability:	1 year from dispatch.
Database Link:	P36578
Background:	cytoplasm, cytosol, cytosolic large ribosomal subunit, extracellular exosome, focal adhesion, intracellular ribonucleoprotein complex, membrane, nucleolus, nucleus, poly(A) RNA binding

[View online »](#)

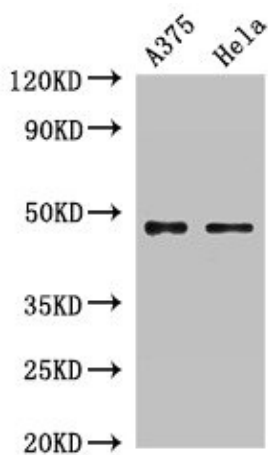
Product images:



Immunohistochemistry of paraffin-embedded human lymph node tissue using [TA387959] at dilution of 1:100



Immunofluorescent analysis of HepG2 cells using [TA387959] at dilution of 1:100 and Alexa Fluor 488-conjugated AffiniPure Goat Anti-Rabbit IgG(H+L)



Western Blot

Positive WB detected in: A375 whole cell lysate,
HeLa whole cell lysate

All lanes: RPL4 antibody at 2 μ g/ml

Secondary

Goat polyclonal to rabbit IgG at 1/50000 dilution

Predicted band size: 48 kDa

Observed band size: 48 kDa