

## Product datasheet for **TA387953M**

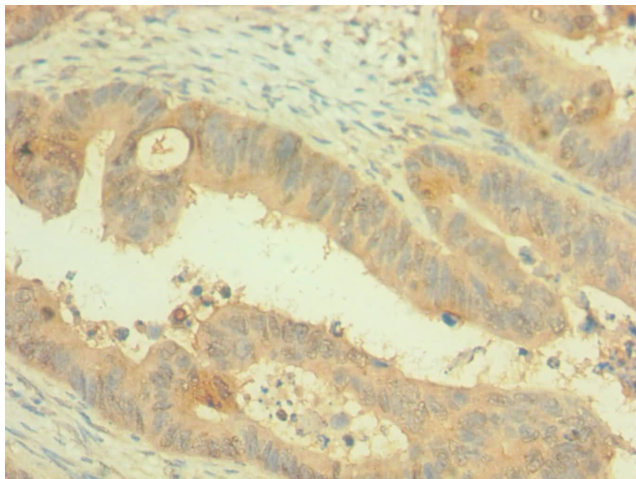
### **PAX4 Rabbit Polyclonal Antibody**

#### **Product data:**

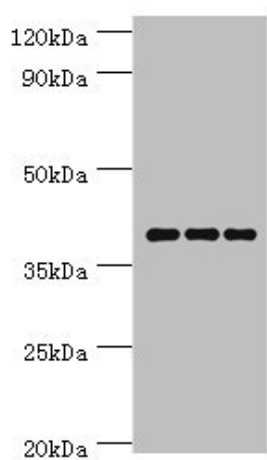
Product Type:	Primary Antibodies
Applications:	IHC, WB
Recommended Dilution:	Recommended dilution: WB:1:500-1:2000, IHC:1:20-1:200
Reactivity:	Mouse, Human
Host:	Rabbit
Isotype:	IgG
Clonality:	Polyclonal
Immunogen:	Recombinant Human Paired box protein Pax-4 protein (50-200AA)
Formulation:	PBS with 0.02% sodium azide, 50% glycerol, pH7.3.
Concentration:	lot specific
Purification:	Antigen Affinity purified
Conjugation:	Unconjugated
Storage:	Upon receipt, store at -20°C or -80°C. Avoid repeated freeze.
Stability:	1 year from dispatch.
Database Link:	<a href="#">O43316</a>
Background:	Plays an important role in the differentiation and development of pancreatic islet beta cells. Transcriptional repressor that binds to a common element in the glucagon, insulin and somatostatin promoters. Competes with PAX6 for this same promoter binding site. Isoform 2 appears to be a dominant negative form antagonizing PAX4 transcriptional activity.

[View online »](#)

## Product images:



Immunohistochemistry of paraffin-embedded human colon cancer using [TA387953] at dilution of 1:100



Western blot  
All lanes: Paired box protein Pax-4 antibody at 6µg/ml  
Lane 1: Hela whole cell lysate  
Lane 2: K562 whole cell lysate  
Lane 3: Mouse pancreatic  
Secondary  
Goat polyclonal to rabbit IgG at 1/10000 dilution  
Predicted band size: 38, 30 kDa  
Observed band size: 38 kDa