

## Product datasheet for **TA387950**

### LITAF Rabbit Polyclonal Antibody

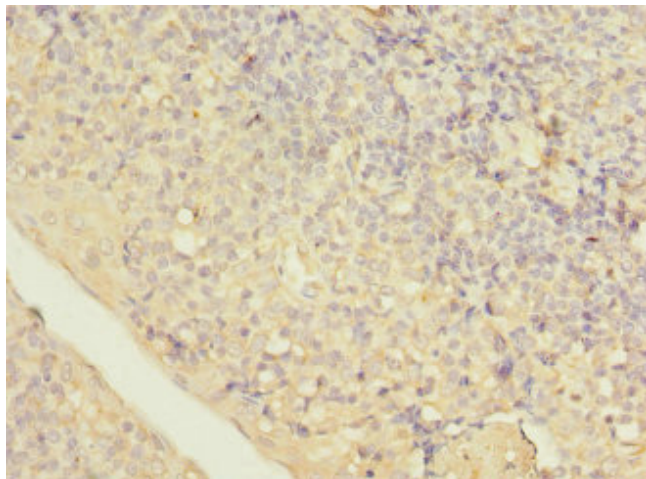
#### Product data:

Product Type:	Primary Antibodies
Applications:	IHC, WB
Recommended Dilution:	Recommended dilution: WB:1:1000-1:5000, IHC:1:20-1:200
Reactivity:	Human
Host:	Rabbit
Isotype:	IgG
Clonality:	Polyclonal
Immunogen:	Recombinant Human Lipopolysaccharide-induced tumor necrosis factor-alpha factor protein (1-161AA)
Formulation:	PBS with 0.02% sodium azide, 50% glycerol, pH7.3.
Concentration:	lot specific
Purification:	Antigen Affinity Purified
Conjugation:	Unconjugated
Storage:	Upon receipt, store at -20°C or -80°C. Avoid repeated freeze.
Stability:	1 year from dispatch.
Database Link:	<a href="#">Q99732</a>
Background:	Probable role in regulating transcription of specific genes. May regulate through NFKB1 the expression of the CCL2/MCP-1 chemokine. May play a role in tumor necrosis factor alpha (TNF-alpha) gene expression.

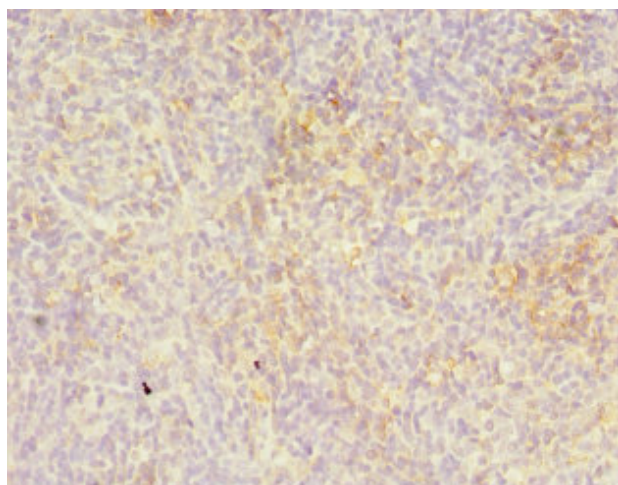


[View online »](#)

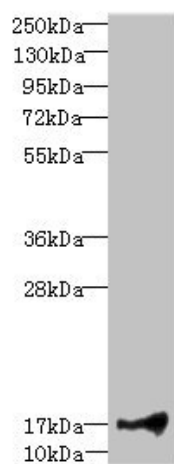
**Product images:**



Immunohistochemistry of paraffin-embedded human tonsil tissue using TA387950 at dilution of 1:100



Immunohistochemistry of paraffin-embedded human thymus tissue using TA387950 at dilution of 1:100



Western blot

All lanes: LITAFantibody at 1.91 $\mu$ g/ml + HeLa whole cell lysate

Secondary

Goat polyclonal to rabbit IgG at 1/10000 dilution

Predicted band size: 18, 24, 16 kDa

Observed band size: 18 kDa