

Product datasheet for **TA387947**

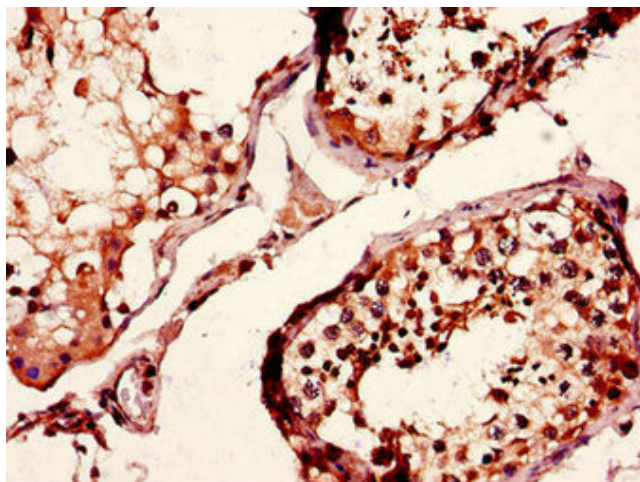
CD37 Rabbit Polyclonal Antibody

Product data:

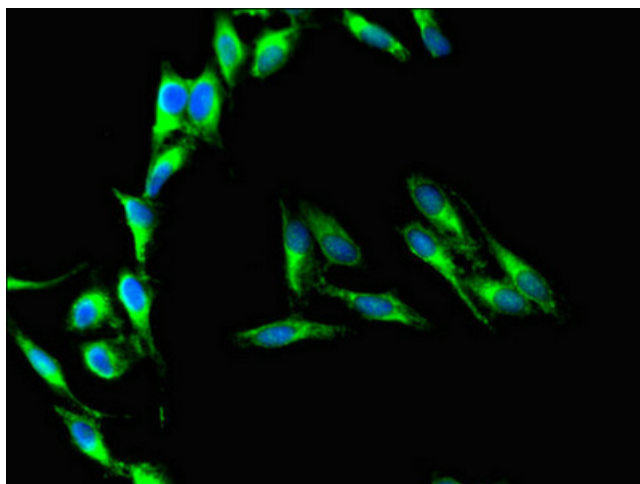
Product Type:	Primary Antibodies
Applications:	IF, IHC, WB
Recommended Dilution:	Recommended dilution: WB:1:1000-1:5000, IHC:1:20-1:200, IF:1:50-1:200
Reactivity:	Mouse, Human
Host:	Rabbit
Isotype:	IgG
Clonality:	Polyclonal
Immunogen:	Recombinant Human Leukocyte antigen CD37 protein (109-237AA)
Formulation:	Preservative: 0.03% Proclin 300 Constituents: 50% Glycerol, 0.01M PBS, PH 7.4
Concentration:	lot specific
Purification:	>95%, Protein G purified
Conjugation:	Unconjugated
Storage:	Upon receipt, store at -20°C or -80°C. Avoid repeated freeze.
Stability:	1 year from dispatch.
Database Link:	P11049
Background:	extracellular exosome, immunological synapse, integral component of plasma membrane, membrane, cell surface receptor signaling pathway



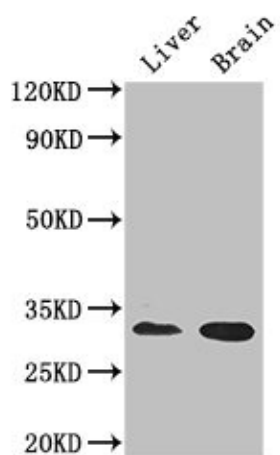
[View online »](#)

Product images:

Immunohistochemistry of paraffin-embedded human testis tissue using TA387947 at dilution of 1:100



Immunofluorescent analysis of HeLa cells using TA387947 at dilution of 1:100 and Alexa Fluor 488-conjugated AffiniPure Goat Anti-Rabbit IgG(H+L)



Western Blot

Positive WB detected in: Mouse liver tissue,
Mouse brain tissue

All lanes: CD37 antibody at 2.7 μ g/ml

Secondary

Goat polyclonal to rabbit IgG at 1/50000 dilution

Predicted band size: 32, 24, 23 kDa

Observed band size: 32 kDa