

Product datasheet for **TA387937M**

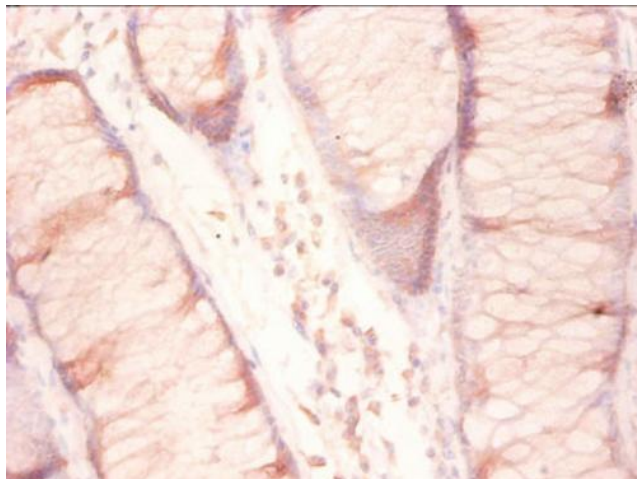
RPL27 Rabbit Polyclonal Antibody

Product data:

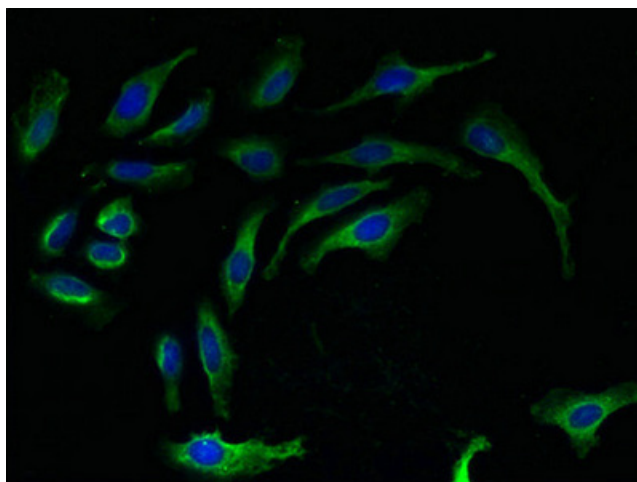
Product Type:	Primary Antibodies
Applications:	IF, IHC, WB
Recommended Dilution:	Recommended dilution: WB:1:500-1:2000, IHC:1:20-1:200, IF:1:50-1:200
Reactivity:	Human
Host:	Rabbit
Isotype:	IgG
Clonality:	Polyclonal
Immunogen:	Recombinant Human 60S ribosomal protein L27 protein (2-136AA)
Formulation:	Preservative: 0.03% Proclin 300 Constituents: 50% Glycerol, 0.01M PBS, PH 7.4
Concentration:	lot specific
Purification:	>95%, Protein G purified
Conjugation:	Unconjugated
Storage:	Upon receipt, store at -20°C or -80°C. Avoid repeated freeze.
Stability:	1 year from dispatch.
Database Link:	P61353
Background:	60S ribosomal protein L27 is a protein that in humans is encoded by the RPL27 gene. Ribosomes, the organelles that catalyze protein synthesis, consist of a small 40S subunit and a large 60S subunit. Together these subunits are composed of 4 RNA species and approximately 80 structurally distinct proteins. This gene encodes a ribosomal protein that is a component of the 60S subunit. The protein belongs to the L27E family of ribosomal proteins. It is located in the cytoplasm. As is typical for genes encoding ribosomal proteins, there are multiple processed pseudogenes of this gene dispersed through the genome.



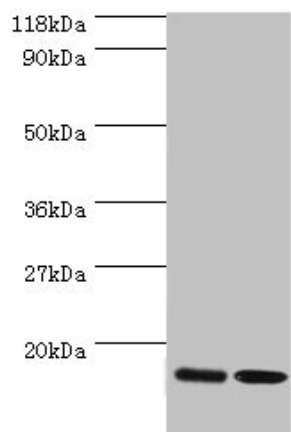
[View online »](#)

Product images:

Immunohistochemistry of paraffin-embedded human colon cancer using [TA387937] at dilution of 1:50



Immunofluorescent analysis of HeLa cells using [TA387937] at dilution of 1:100 and Alexa Fluor 488-conjugated AffiniPure Goat Anti-Rabbit IgG(H+L)



Western blot

All lanes: RPL27 antibody at 2 μ g/ml

Lane 1: EC109 whole cell lysate

Lane 2: 293T whole cell lysate

Secondary

Goat polyclonal to rabbit IgG at 1/15000 dilution

Predicted band size: 16 kDa

Observed band size: 16 kDa