

Product datasheet for **TA387936M**

SYNJ2BP Rabbit Polyclonal Antibody

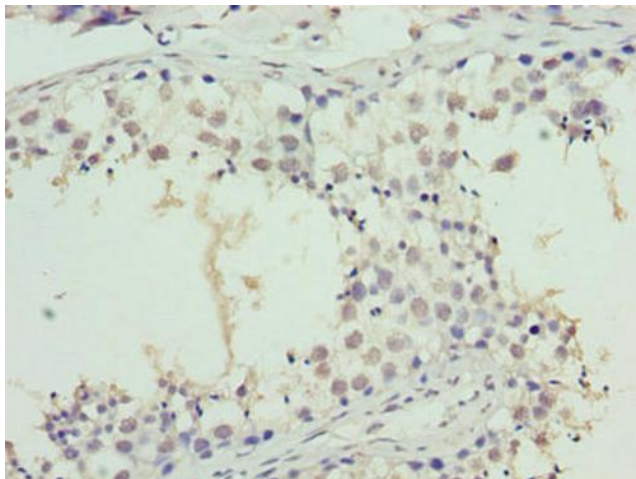
Product data:

| | |
|-----------------------|--|
| Product Type: | Primary Antibodies |
| Applications: | IHC, IP, WB |
| Recommended Dilution: | Recommended dilution: WB:1:500-1:5000, IHC:1:20-1:200, IP:1:200-1:2000 |
| Reactivity: | Rat, Human |
| Host: | Rabbit |
| Isotype: | IgG |
| Clonality: | Polyclonal |
| Immunogen: | Recombinant Human Synaptojanin-2-binding protein (1-117AA) |
| Formulation: | Preservative: 0.03% Proclin 300 Constituents: 50% Glycerol, 0.01M PBS, PH 7.4 |
| Concentration: | lot specific |
| Purification: | >95%, Protein G purified |
| Conjugation: | Unconjugated |
| Storage: | Upon receipt, store at -20°C or -80°C. Avoid repeated freeze. |
| Stability: | 1 year from dispatch. |
| Database Link: | P57105 |
| Background: | Regulates endocytosis of activin type 2 receptor kinases through the Ral/RALBP1-dependent pathway and may be involved in suppression of activin-induced signal transduction. |

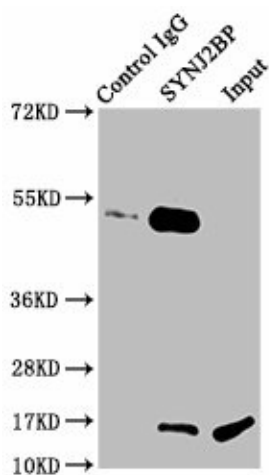


[View online »](#)

Product images:



Immunohistochemistry of paraffin-embedded human testis tissue using [TA387936] at dilution of 1:100

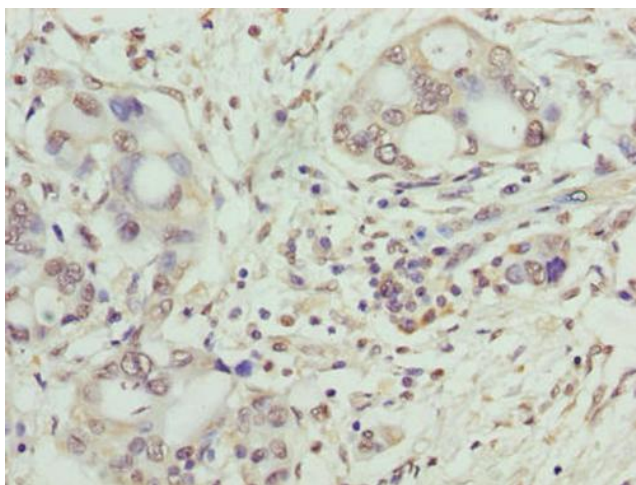


Immunoprecipitating SYNJ2BP in Rat kidney tissue

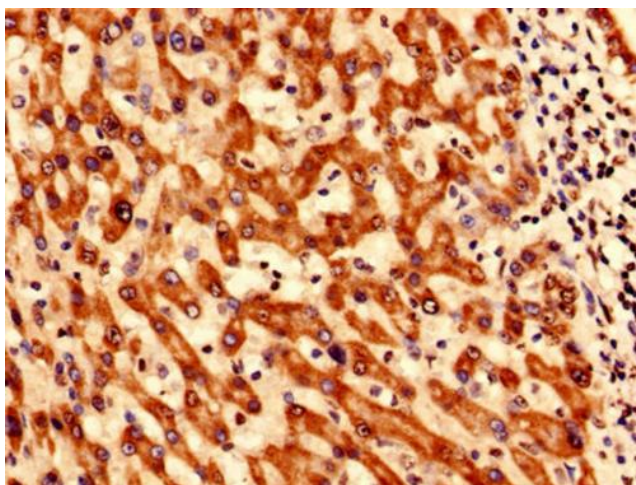
Lane 1: Rabbit control IgG instead of [TA387936] in Rat kidney tissue. For western blotting, a HRP-conjugated light chain specific antibody was used as the secondary antibody (1/50000)

Lane 2: [TA387936] (6µg) + Rat kidney tissue (500µg)

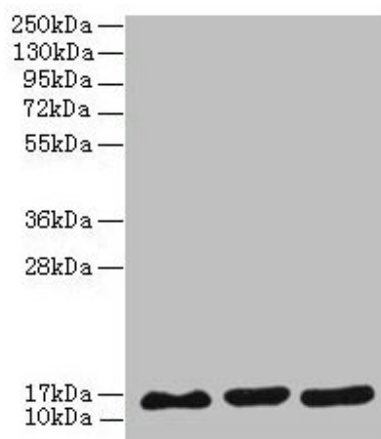
Lane 3: Rat kidney tissue (20µg)



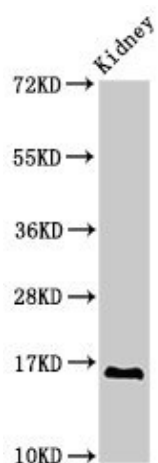
Immunohistochemistry of paraffin-embedded human pancreatic cancer using [TA387936] at dilution of 1:100



Immunohistochemistry analysis of human liver cancer using [TA387936] at dilution of 1:100



Western blot
All lanes: SYNJ2BP antibody at 3 μ g/ml
Lane 1: MCF-7 whole cell lysate
Lane 2: U251 whole cell lysate
Lane 3: Caco-2 whole cell lysate
Secondary
Goat polyclonal to rabbit IgG at 1/10000 dilution
Predicted band size: 16 kDa
Observed band size: 16 kDa



Western Blot

Positive WB detected in: Rat kidney tissue

All lanes: SYNJ2BP antibody at 2.8µg/ml

Secondary

Goat polyclonal to rabbit IgG at 1/50000 dilution

Predicted band size: 16 kDa

Observed band size: 16 kDa