

Product datasheet for **TA387935M**

DEDD Rabbit Polyclonal Antibody

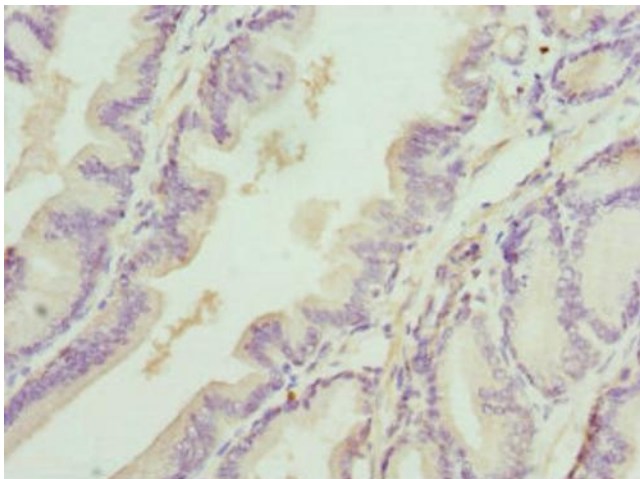
Product data:

Product Type:	Primary Antibodies
Applications:	IHC, WB
Recommended Dilution:	Recommended dilution: WB:1:1000-1:5000, IHC:1:20-1:200
Reactivity:	Mouse, Human
Host:	Rabbit
Isotype:	IgG
Clonality:	Polyclonal
Immunogen:	Recombinant Human Death effector domain-containing protein (1-318AA)
Formulation:	PBS with 0.02% sodium azide, 50% glycerol, pH7.3.
Concentration:	lot specific
Purification:	Antigen Affinity Purified
Conjugation:	Unconjugated
Storage:	Upon receipt, store at -20°C or -80°C. Avoid repeated freeze.
Stability:	1 year from dispatch.
Database Link:	O75618
Background:	A scaffold protein that directs CASP3 to certain substrates and facilitates their ordered degradation during apoptosis. May also play a role in mediating CASP3 cleavage of KRT18. Regulates degradation of intermediate filaments during apoptosis. May play a role in the general transcription machinery in the nucleus and might be an important regulator of the activity of GTF3C3. Inhibits DNA transcription in vitro (By similarity).

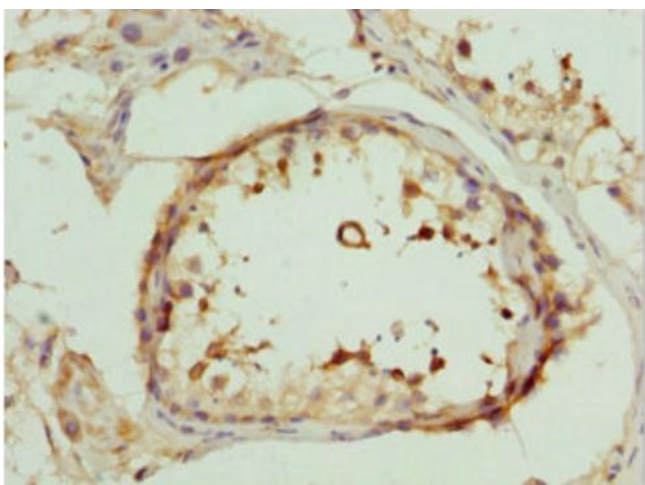


[View online »](#)

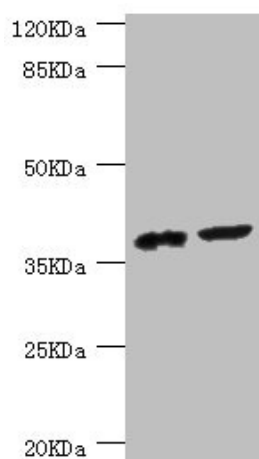
Product images:



Immunohistochemistry of paraffin-embedded human prostate cancer using [TA387935] at dilution of 1:100



Immunohistochemistry of paraffin-embedded human testis tissue using [TA387935] at dilution of 1:100



Western blot

All lanes: DEDD antibody at 0.56 μ g/ml

Lane 1: Mouse lung tissue

Lane 2: Mouse thymus tissue

Secondary

Goat polyclonal to rabbit IgG at 1/10000 dilution

Predicted band size: 37, 41 kDa

Observed band size: 37 kDa