

Product datasheet for **TA387931M**

KRT35 Rabbit Polyclonal Antibody

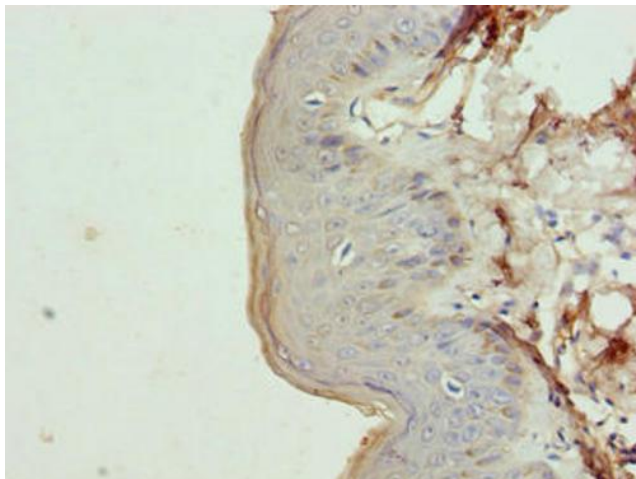
Product data:

Product Type:	Primary Antibodies
Applications:	IHC, WB
Recommended Dilution:	Recommended dilution: WB:1:1000-1:5000, IHC:1:20-1:200
Reactivity:	Human
Host:	Rabbit
Isotype:	IgG
Clonality:	Polyclonal
Immunogen:	Recombinant Human Keratin, type I cuticular Ha5 protein (1-455AA)
Formulation:	Preservative: 0.03% Proclin 300 Constituents: 50% Glycerol, 0.01M PBS, PH 7.4
Concentration:	lot specific
Purification:	>95%, Protein G purified
Conjugation:	Unconjugated
Storage:	Upon receipt, store at -20°C or -80°C. Avoid repeated freeze.
Stability:	1 year from dispatch.
Database Link:	Q92764
Background:	extracellular exosome, extracellular space, anatomical structure morphogenesis

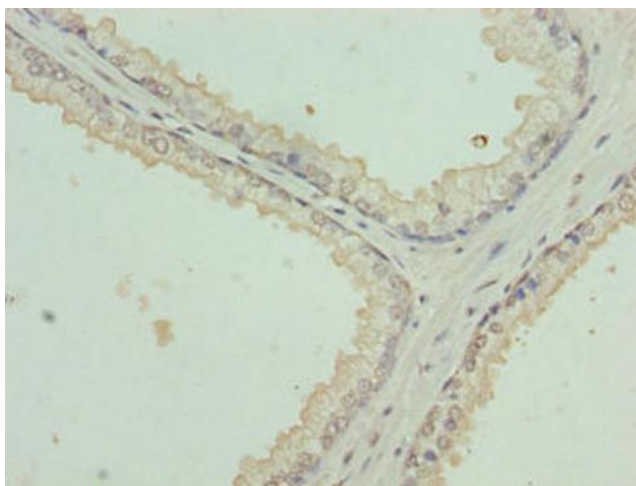


[View online »](#)

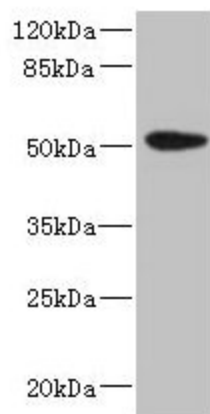
Product images:



Immunohistochemistry of paraffin-embedded human skin tissue using [TA387931] at dilution of 1:100



Immunohistochemistry of paraffin-embedded human prostate cancer using [TA387931] at dilution of 1:100



Western blot

All lanes: KRT35 antibody at 4 μ g/ml + PC-3 whole cell lysate

Secondary

Goat polyclonal to rabbit IgG at 1/10000 dilution

Predicted band size: 51 kDa

Observed band size: 51 kDa