

## Product datasheet for **TA387929M**

### **SIRPB1 Rabbit Polyclonal Antibody**

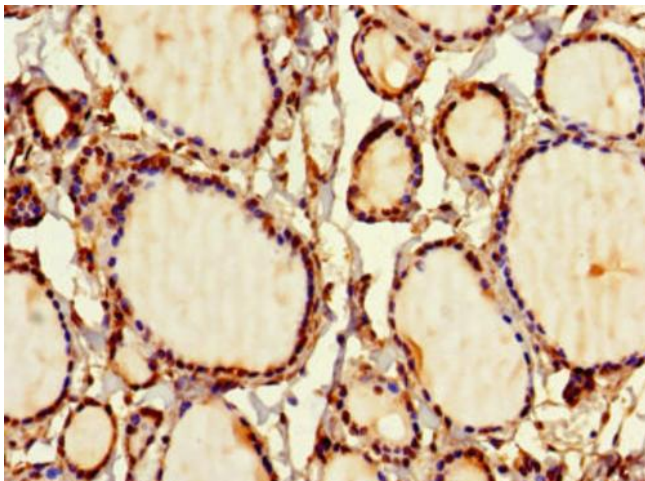
#### **Product data:**

Product Type:	Primary Antibodies
Applications:	IF, IHC, WB
Recommended Dilution:	Recommended dilution: WB:1:1000-1:5000, IHC:1:20-1:200, IF:1:50-1:200
Reactivity:	Mouse, Human
Host:	Rabbit
Isotype:	IgG
Clonality:	Polyclonal
Immunogen:	Recombinant Human Signal-regulatory protein beta-1 protein (30-371AA)
Formulation:	Preservative: 0.03% Proclin 300 Constituents: 50% Glycerol, 0.01M PBS, PH 7.4
Concentration:	lot specific
Purification:	>95%, Protein G purified
Conjugation:	Unconjugated
Storage:	Upon receipt, store at -20°C or -80°C. Avoid repeated freeze.
Stability:	1 year from dispatch.
Database Link:	<a href="#">O00241</a>
Background:	Immunoglobulin-like cell surface receptor involved in the negative regulation of receptor tyrosine kinase-coupled signaling processes. Participates also in the recruitment of tyrosine kinase SYK.

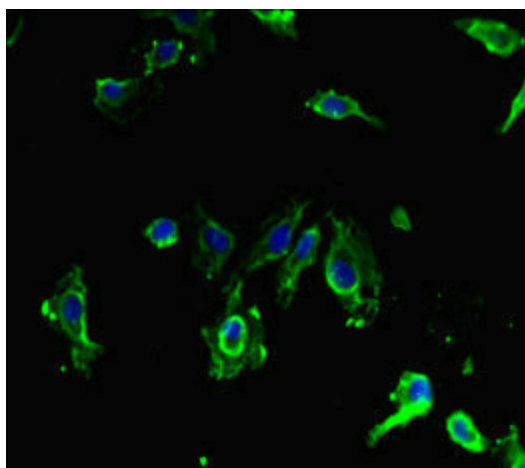


[View online »](#)

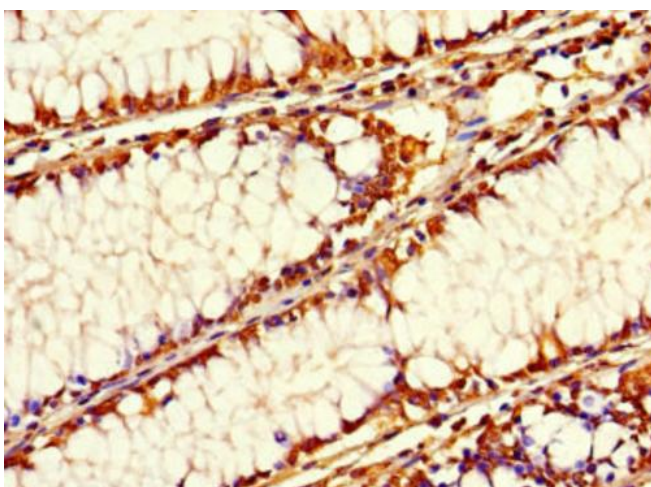
## Product images:



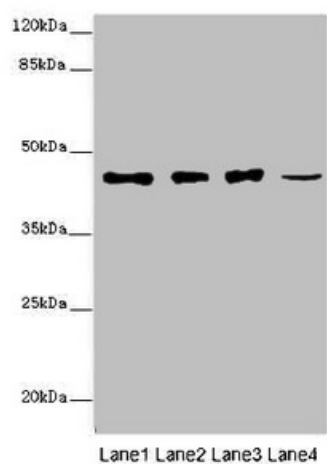
Immunohistochemistry of paraffin-embedded human thyroid tissue using [TA387929] at dilution of 1:100



Immunofluorescent analysis of HeLa cells using [TA387929] at dilution of 1:100 and Alexa Fluor 488-conjugated AffiniPure Goat Anti-Rabbit IgG(H+L)



Immunohistochemistry of paraffin-embedded human colon cancer using [TA387929] at dilution of 1:100



#### Western blot

All lanes: SIRPB1 antibody at 6μg/ml

Lane 1: A549 whole cell lysate

Lane 2: PC-3 whole cell lysate

Lane 3: A375 whole cell lysate

Lane 4: Mouse heart tissue

Secondary

Goat polyclonal to rabbit IgG at 1/10000 dilution

Predicted band size: 44, 20 kDa

Observed band size: 44 kDa