

## Product datasheet for **TA387928**

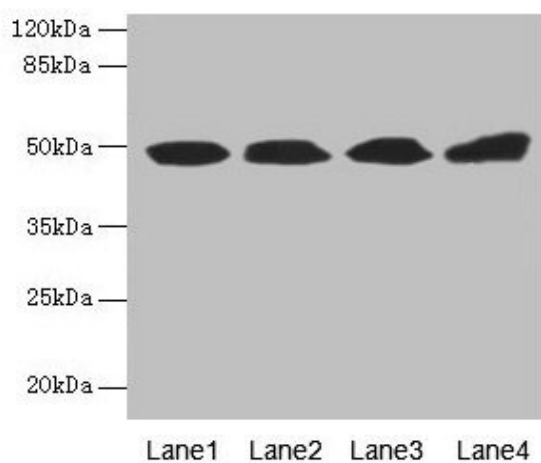
### TBCEL Rabbit Polyclonal Antibody

#### Product data:

|                       |                                                                                  |
|-----------------------|----------------------------------------------------------------------------------|
| Product Type:         | Primary Antibodies                                                               |
| Applications:         | WB                                                                               |
| Recommended Dilution: | Recommended dilution: WB:1:1000-1:5000                                           |
| Reactivity:           | Rat, Human                                                                       |
| Host:                 | Rabbit                                                                           |
| Isotype:              | IgG                                                                              |
| Clonality:            | Polyclonal                                                                       |
| Immunogen:            | Recombinant Human Tubulin-specific chaperone cofactor E-like protein (1-424AA)   |
| Formulation:          | Preservative: 0.03% Proclin 300<br>Constituents: 50% Glycerol, 0.01M PBS, PH 7.4 |
| Concentration:        | lot specific                                                                     |
| Purification:         | >95%, Protein G purified                                                         |
| Conjugation:          | Unconjugated                                                                     |
| Storage:              | Upon receipt, store at -20°C or -80°C. Avoid repeated freeze.                    |
| Stability:            | 1 year from dispatch.                                                            |
| Database Link:        | <a href="#">Q5QJ74</a>                                                           |
| Background:           | Acts as a regulator of tubulin stability.                                        |



[View online »](#)

**Product images:**

## Western blot

All lanes: TBCEL antibody at 12 $\mu$ g/ml

Lane 1: Rat gonadal tissue

Lane 2: PC-3 whole cell lysate

Lane 3: Rat heart tissue

Lane 4: 293T whole cell lysate

Secondary

Goat polyclonal to rabbit IgG at 1/10000 dilution

Predicted band size: 49 kDa

Observed band size: 49 kDa