

Product datasheet for **TA387927M**

ZNF2 Rabbit Polyclonal Antibody

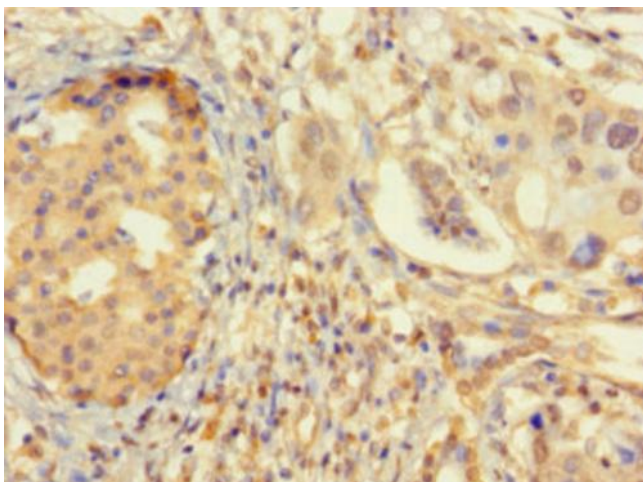
Product data:

Product Type:	Primary Antibodies
Applications:	IHC, WB
Recommended Dilution:	Recommended dilution: WB:1:2000-1:5000, IHC:1:20-1:200
Reactivity:	Mouse, Human
Host:	Rabbit
Isotype:	IgG
Clonality:	Polyclonal
Immunogen:	Recombinant Human Zinc finger protein 2 protein (134-289AA)
Formulation:	Preservative: 0.03% Proclin 300 Constituents: 50% Glycerol, 0.01M PBS, PH 7.4
Concentration:	lot specific
Purification:	>95%, Protein G purified
Conjugation:	Unconjugated
Storage:	Upon receipt, store at -20°C or -80°C. Avoid repeated freeze.
Stability:	1 year from dispatch.
Database Link:	Q9BSG1
Background:	May be involved in transcriptional regulation.

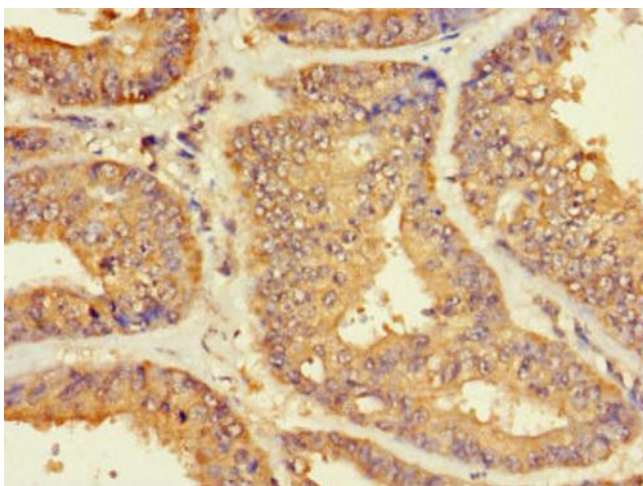


[View online »](#)

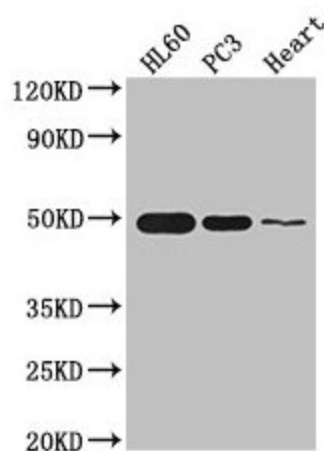
Product images:



Immunohistochemistry of paraffin-embedded human pancreatic cancer using [TA387927] at dilution of 1:100



Immunohistochemistry of paraffin-embedded human endometrial cancer using [TA387927] at dilution of 1:100



Western Blot

Positive WB detected in: HL60 whole cell lysate,

PC-3 whole cell lysate, Mouse heart tissue

All lanes: ZNF2 antibody at 2.7 μ g/ml

Secondary

Goat polyclonal to rabbit IgG at 1/50000 dilution

Predicted band size: 49, 45 kDa

Observed band size: 49 kDa