

## Product datasheet for **TA387918**

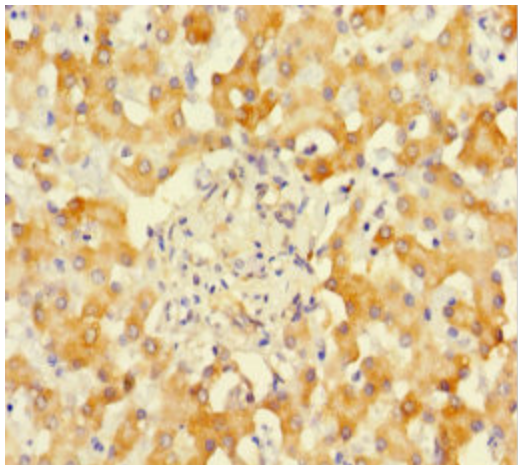
### SUOX Rabbit Polyclonal Antibody

#### Product data:

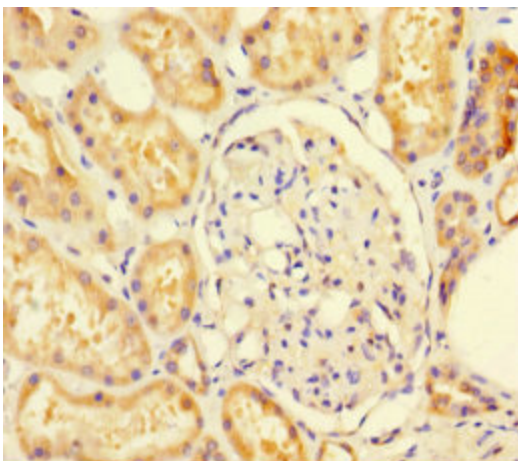
Product Type:	Primary Antibodies
Applications:	IHC, WB
Recommended Dilution:	Recommended dilution: WB:1:1000-1:5000, IHC:1:20-1:200
Reactivity:	Rat, Human
Host:	Rabbit
Isotype:	IgG
Clonality:	Polyclonal
Immunogen:	Recombinant Human Sulfite oxidase, mitochondrial protein (80-545AA)
Formulation:	Preservative: 0.03% Proclin 300 Constituents: 50% Glycerol, 0.01M PBS, PH 7.4
Concentration:	lot specific
Purification:	>95%, Protein G purified
Conjugation:	Unconjugated
Storage:	Upon receipt, store at -20°C or -80°C. Avoid repeated freeze.
Stability:	1 year from dispatch.
Database Link:	<a href="#">P51687</a>
Background:	Sulfite oxidase is a homodimeric protein localized to the intermembrane space of mitochondria. Each subunit contains a heme domain and a molybdopterin-binding domain. The enzyme catalyzes the oxidation of sulfite to sulfate, the final reaction in the oxidative degradation of the sulfur amino acids cysteine and methionine. Sulfite oxidase deficiency results in neurological abnormalities which are often fatal at an early age. Alternative splicing results in multiple transcript variants encoding identical proteins.



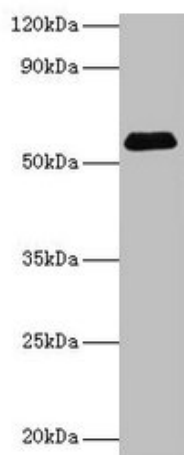
[View online »](#)

**Product images:**

Immunohistochemistry of paraffin-embedded human liver tissue using TA387918 at dilution of 1:100



Immunohistochemistry of paraffin-embedded human kidney tissue using TA387918 at dilution of 1:100



Western blot

All lanes: SUOX antibody at 2 $\mu$ g/ml + Rat liver tissue

Secondary

Goat polyclonal to rabbit IgG at 1/15000 dilution

Predicted band size: 61 kDa

Observed band size: 61 kDa