

Product datasheet for **TA387913M**

PECR Rabbit Polyclonal Antibody

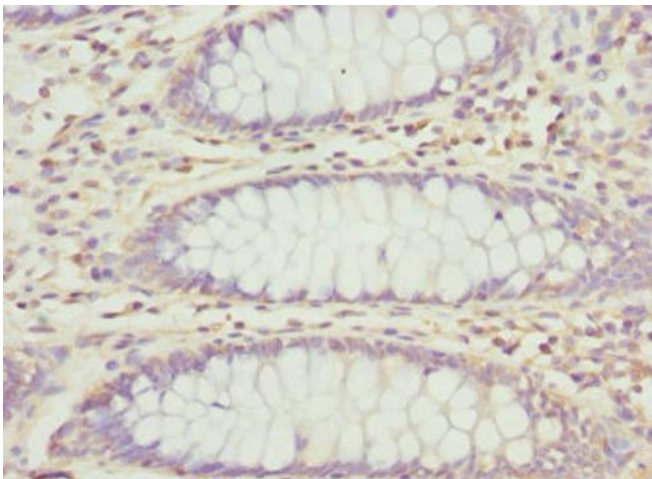
Product data:

| | |
|-----------------------|---|
| Product Type: | Primary Antibodies |
| Applications: | IHC, WB |
| Recommended Dilution: | Recommended dilution: WB:1:1000-1:5000, IHC:1:20-1:200 |
| Reactivity: | Human |
| Host: | Rabbit |
| Isotype: | IgG |
| Clonality: | Polyclonal |
| Immunogen: | Recombinant Human Peroxisomal trans-2-enoyl-CoA reductase protein (24-303AA) |
| Formulation: | PBS with 0.02% sodium azide, 50% glycerol, pH7.3. |
| Concentration: | lot specific |
| Purification: | Antigen Affinity Purified |
| Conjugation: | Unconjugated |
| Storage: | Upon receipt, store at -20°C or -80°C. Avoid repeated freeze. |
| Stability: | 1 year from dispatch. |
| Database Link: | Q9BY49 |
| Background: | Participates in chain elongation of fatty acids. Has no 2,4-dienoyl-CoA reductase activity. |

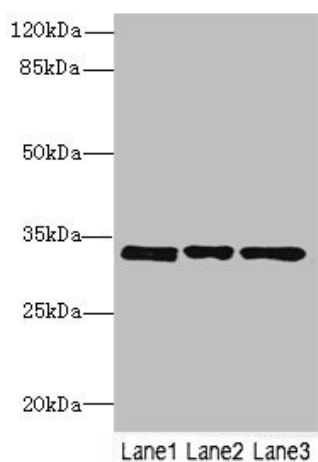


[View online »](#)

Product images:



Immunohistochemistry of paraffin-embedded human colon cancer using [TA387913] at dilution of 1:100



Western blot

All lanes: PECR antibody at 3.27 μ g/ml

Lane 1: MCF-7 whole cell lysate

Lane 2: HepG2 whole cell lysate

Lane 3: Hela whole cell lysate

Secondary

Goat polyclonal to rabbit IgG at 1/10000 dilution

Predicted band size: 33, 17 kDa

Observed band size: 33 kDa