

## Product datasheet for **TA387911M**

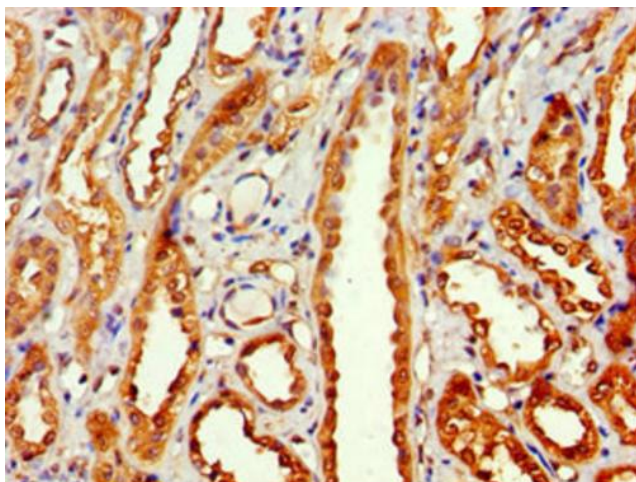
### MTMR14 Rabbit Polyclonal Antibody

#### Product data:

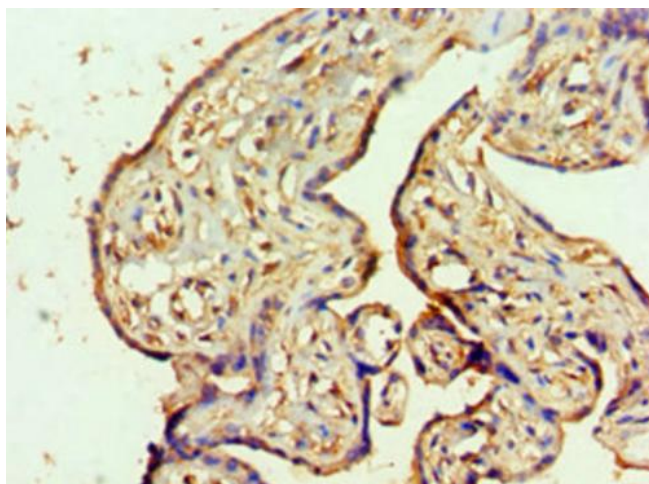
Product Type:	Primary Antibodies
Applications:	IHC, WB
Recommended Dilution:	Recommended dilution: WB:1:500-1:2000, IHC:1:20-1:200
Reactivity:	Mouse, Human
Host:	Rabbit
Isotype:	IgG
Clonality:	Polyclonal
Immunogen:	Recombinant Human Myotubularin-related protein 14 protein (1-280AA)
Formulation:	PBS with 0.02% sodium azide, 50% glycerol, pH7.3.
Concentration:	lot specific
Purification:	Antigen Affinity Purified
Conjugation:	Unconjugated
Storage:	Upon receipt, store at -20°C or -80°C. Avoid repeated freeze.
Stability:	1 year from dispatch.
Database Link:	<a href="#">Q8NCE2</a>
Background:	Lipid phosphatase which efficiently dephosphorylates phosphatidylinositol 3-phosphate (PtdIns3P) and PtdIns(3,5)P <sub>2</sub> ; inactive toward PtdIns4P, PtdIns(3,4)P <sub>2</sub> , PtdIns(4,5)P <sub>2</sub> and PtdIns(3,4,5)P <sub>3</sub> .



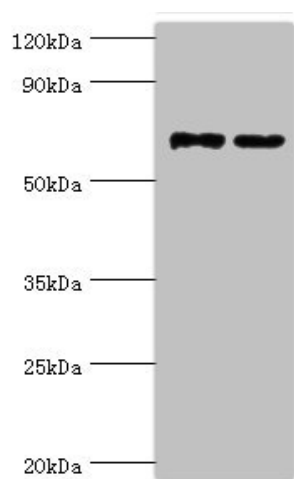
[View online »](#)

**Product images:**

Immunohistochemistry of paraffin-embedded human kidney tissue using [TA387911] at dilution of 1:100



Immunohistochemistry of paraffin-embedded human placenta tissue using [TA387911] at dilution of 1:100



Western blot

All lanes: Myotubularin-related protein 14 antibody at 10 $\mu$ g/ml

Lane 1: Hela whole cell lysate

Lane 2: Mouse skeletal muscle tissue

Secondary

Goat polyclonal to rabbit IgG at 1/10000 dilution

Predicted band size: 73, 67, 61 kDa

Observed band size: 73 kDa