

## Product datasheet for **TA387910M**

### APBB1IP Rabbit Polyclonal Antibody

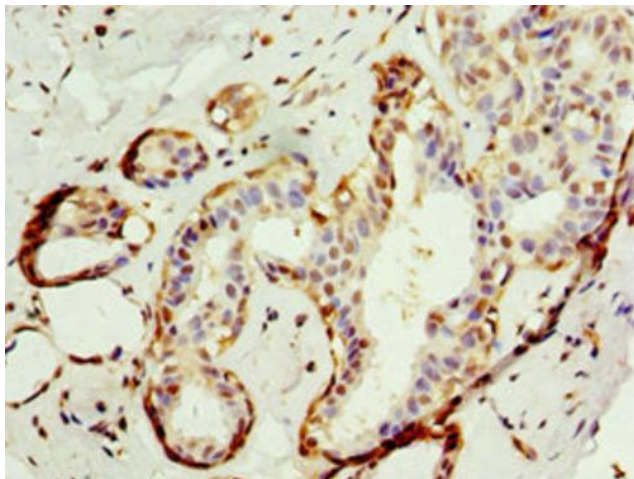
#### Product data:

Product Type:	Primary Antibodies
Applications:	IHC, WB
Recommended Dilution:	Recommended dilution: WB:1:200-1:1000, IHC:1:20-1:200
Reactivity:	Rat, Human
Host:	Rabbit
Isotype:	IgG
Clonality:	Polyclonal
Immunogen:	Recombinant Human Amyloid beta A4 precursor protein-binding family B member 1-interacting protein (1-150AA)
Formulation:	PBS with 0.02% sodium azide, 50% glycerol, pH7.3.
Concentration:	lot specific
Purification:	Antigen Affinity Purified
Conjugation:	Unconjugated
Storage:	Upon receipt, store at -20°C or -80°C. Avoid repeated freeze.
Stability:	1 year from dispatch.
Database Link:	<a href="#">Q7Z5R6</a>
Background:	Appears to function in the signal transduction from Ras activation to actin cytoskeletal remodeling. Suppresses insulin-induced promoter activities through AP1 and SRE. Mediates Rap1-induced adhesion.

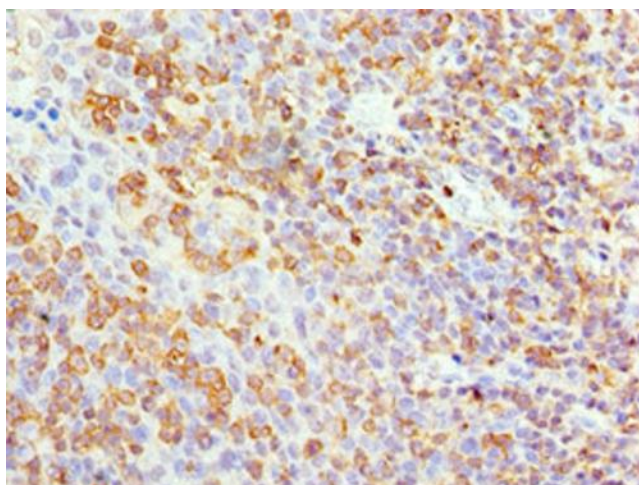


[View online »](#)

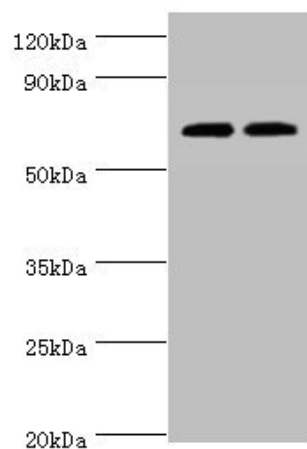
## Product images:



Immunohistochemistry of paraffin-embedded human breast cancer using [TA387910] at dilution of 1:100



Immunohistochemistry of paraffin-embedded human tonsil tissue using [TA387910] at dilution of 1:100



Western blot

All lanes: APBB1IP antibody at 4 $\mu$ g/ml

Lane 1: HL60 whole cell lysate

Lane 2: Rat spleen tissue

Secondary

Goat polyclonal to rabbit IgG at 1/10000 dilution

Predicted band size: 74, 19 kDa

Observed band size: 74 kDa