

## Product datasheet for **TA387901**

### NUBPL Rabbit Polyclonal Antibody

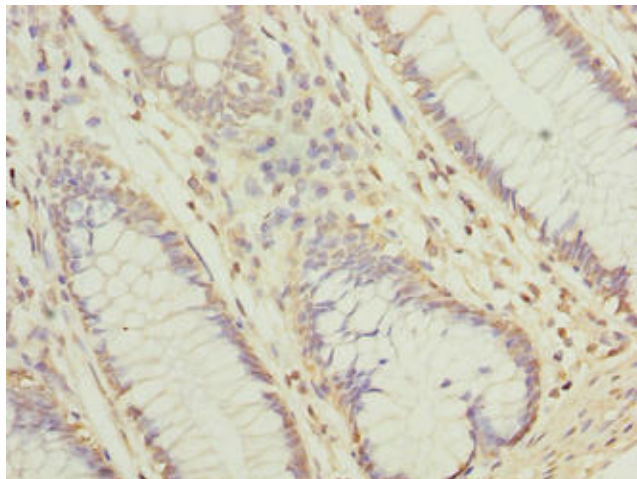
#### Product data:

Product Type:	Primary Antibodies
Applications:	IHC, WB
Recommended Dilution:	Recommended dilution: WB:1:500-1:2000, IHC:1:20-1:200
Reactivity:	Human
Host:	Rabbit
Isotype:	IgG
Clonality:	Polyclonal
Immunogen:	Recombinant Human Iron-sulfur protein NUBPL protein (39-319AA)
Formulation:	Preservative: 0.03% Proclin 300 Constituents: 50% Glycerol, 0.01M PBS, PH 7.4
Concentration:	lot specific
Purification:	Antigen Affinity Purified
Conjugation:	Unconjugated
Storage:	Upon receipt, store at -20°C or -80°C. Avoid repeated freeze.
Stability:	1 year from dispatch.
Database Link:	<a href="#">Q8TB37</a>
Background:	Required for the assembly of the mitochondrial membrane respiratory chain NADH dehydrogenase (Complex I). May deliver of one or more Fe-S clusters to complex I subunits.

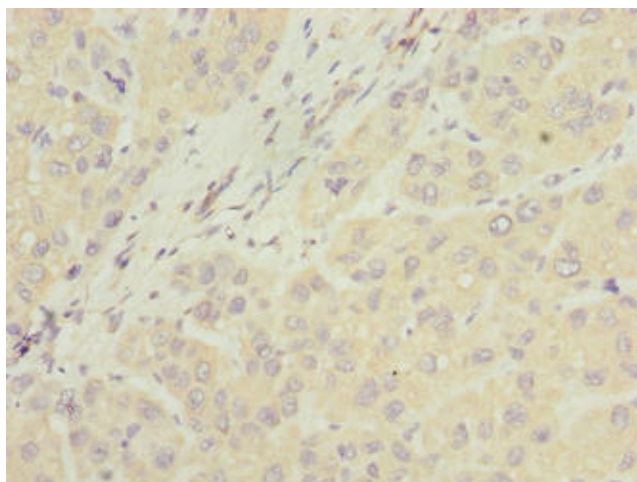


[View online »](#)

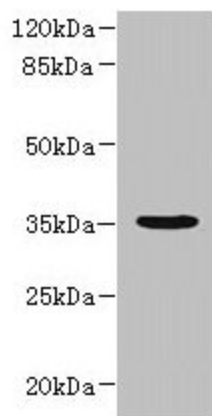
**Product images:**



Immunohistochemistry of paraffin-embedded human colon cancer using TA387901 at dilution of 1:100



Immunohistochemistry of paraffin-embedded human liver cancer using TA387901 at dilution of 1:100



Western blot

All lanes: NUBPL antibody at 1 $\mu$ g/ml + A431 whole cell lysate

Secondary

Goat polyclonal to rabbit IgG at 1/10000 dilution

Predicted band size: 35, 19 kDa

Observed band size: 35 kDa