

## Product datasheet for **TA387899M**

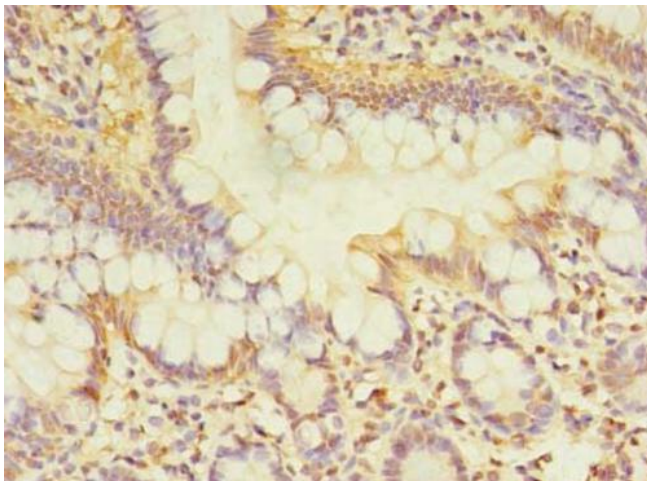
### **TCP11L2 Rabbit Polyclonal Antibody**

#### **Product data:**

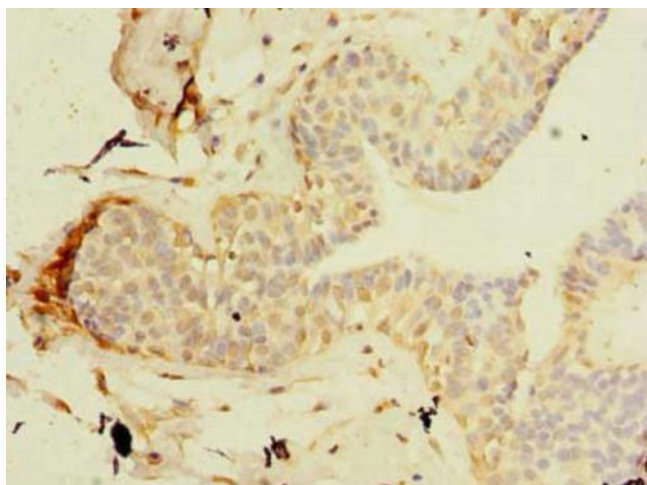
Product Type:	Primary Antibodies
Applications:	IHC, WB
Recommended Dilution:	Recommended dilution: WB:1:500-1:2000, IHC:1:20-1:200
Reactivity:	Human
Host:	Rabbit
Isotype:	IgG
Clonality:	Polyclonal
Immunogen:	Recombinant Human T-complex protein 11-like protein 2 protein (1-210AA)
Formulation:	Preservative: 0.03% Proclin 300 Constituents: 50% Glycerol, 0.01M PBS, PH 7.4
Concentration:	lot specific
Purification:	Antigen Affinity Purified
Conjugation:	Unconjugated
Storage:	Upon receipt, store at -20°C or -80°C. Avoid repeated freeze.
Stability:	1 year from dispatch.
Database Link:	<a href="#">Q8N4U5</a>



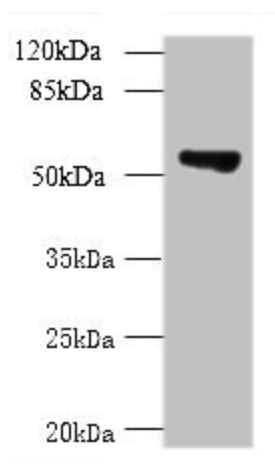
[View online »](#)

**Product images:**

Immunohistochemistry of paraffin-embedded human small intestine tissue using [TA387899] at dilution of 1:100



Immunohistochemistry of paraffin-embedded human breast cancer tissue using [TA387899] at dilution of 1:100



Western blot

All lanes: TCP11L2 antibody at 1µg/ml + A549 whole cell lysate

Secondary

Goat polyclonal to rabbit IgG at 1/10000 dilution

Predicted band size: 59, 30 kDa

Observed band size: 59 kDa