

Product datasheet for **TA387899**

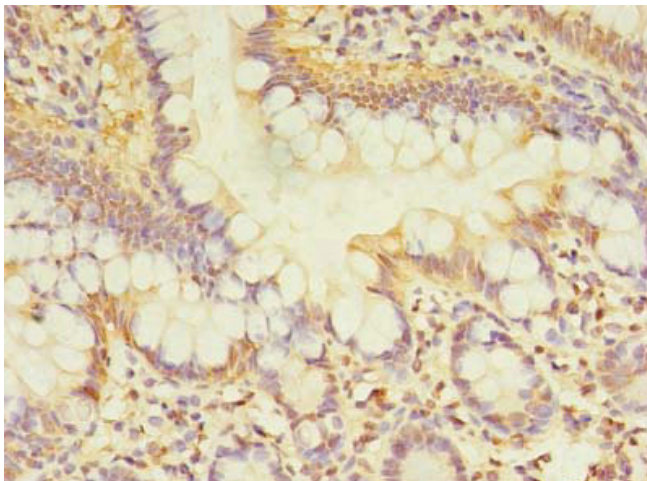
TCP11L2 Rabbit Polyclonal Antibody

Product data:

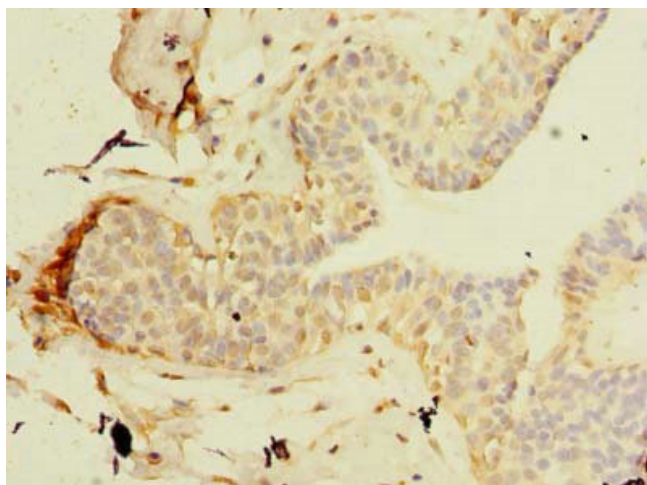
Product Type:	Primary Antibodies
Applications:	IHC, WB
Recommended Dilution:	Recommended dilution: WB:1:500-1:2000, IHC:1:20-1:200
Reactivity:	Human
Host:	Rabbit
Isotype:	IgG
Clonality:	Polyclonal
Immunogen:	Recombinant Human T-complex protein 11-like protein 2 protein (1-210AA)
Formulation:	Preservative: 0.03% Proclin 300 Constituents: 50% Glycerol, 0.01M PBS, PH 7.4
Concentration:	lot specific
Purification:	Antigen Affinity Purified
Conjugation:	Unconjugated
Storage:	Upon receipt, store at -20°C or -80°C. Avoid repeated freeze.
Stability:	1 year from dispatch.
Database Link:	Q8N4U5



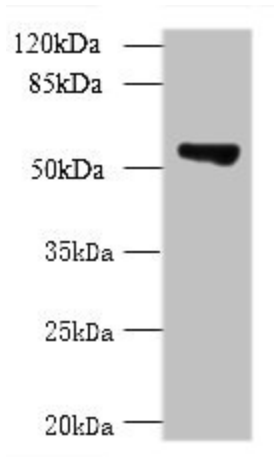
[View online »](#)

Product images:

Immunohistochemistry of paraffin-embedded human small intestine tissue using TA387899 at dilution of 1:100



Immunohistochemistry of paraffin-embedded human breast cancer using TA387899 at dilution of 1:100



Western blot
All lanes: TCP11L2 antibody at 1 μ g/ml + A549 whole cell lysate
Secondary
Goat polyclonal to rabbit IgG at 1/10000 dilution
Predicted band size: 59, 30 kDa
Observed band size: 59 kDa