

## Product datasheet for **TA387896M**

### SRR Rabbit Polyclonal Antibody

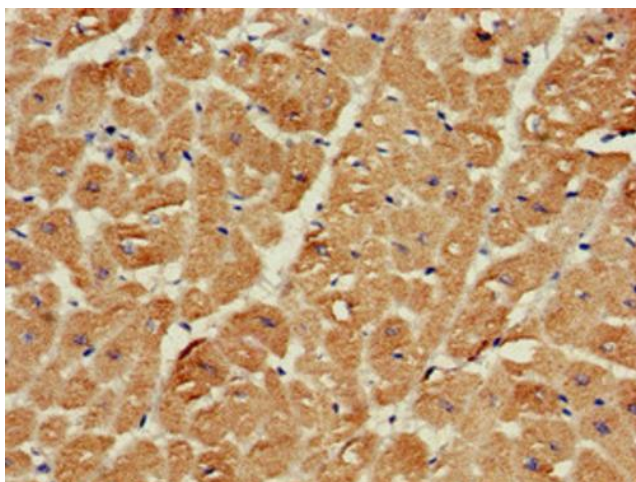
#### Product data:

Product Type:	Primary Antibodies
Applications:	IHC, WB
Recommended Dilution:	Recommended dilution: WB:1:500-1:5000, IHC:1:20-1:200
Reactivity:	Mouse, Human
Host:	Rabbit
Isotype:	IgG
Clonality:	Polyclonal
Immunogen:	Recombinant Human Serine racemase protein (1-340AA)
Formulation:	Preservative: 0.03% Proclin 300 Constituents: 50% Glycerol, 0.01M PBS, pH 7.4
Concentration:	lot specific
Purification:	>95%, Protein G purified
Conjugation:	Unconjugated
Storage:	Upon receipt, store at -20°C or -80°C. Avoid repeated freeze.
Stability:	1 year from dispatch.
Database Link:	<a href="#">Q9GZT4</a>
Background:	Catalyzes the synthesis of D-serine from L-serine. D-serine is a key coagonist with glutamate at NMDA receptors. Has dehydratase activity towards both L-serine and D-serine.

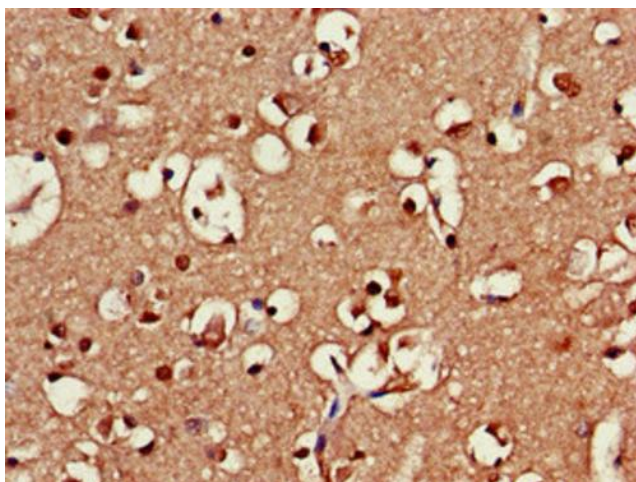


[View online »](#)

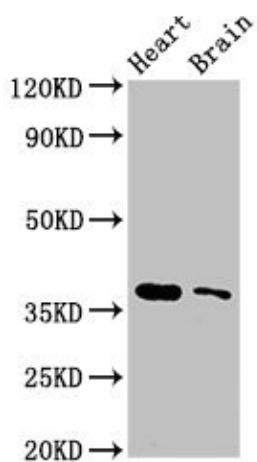
## Product images:



Immunohistochemistry of paraffin-embedded human heart tissue using [TA387896] at dilution of 1:100



Immunohistochemistry of paraffin-embedded human brain tissue using [TA387896] at dilution of 1:100



Western Blot

Positive WB detected in: Mouse heart tissue,  
Mouse brain tissue

All lanes: SRR antibody at 3 $\mu$ g/ml

Secondary

Goat polyclonal to rabbit IgG at 1/50000 dilution

Predicted band size: 37 kDa

Observed band size: 37 kDa