

## Product datasheet for **TA387888**

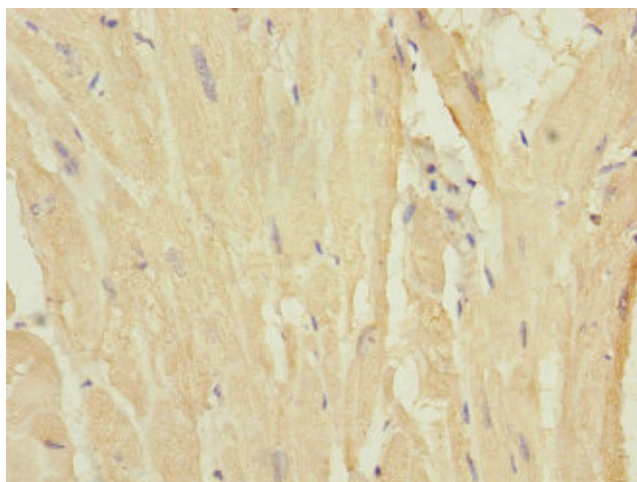
### MYL7 Rabbit Polyclonal Antibody

#### Product data:

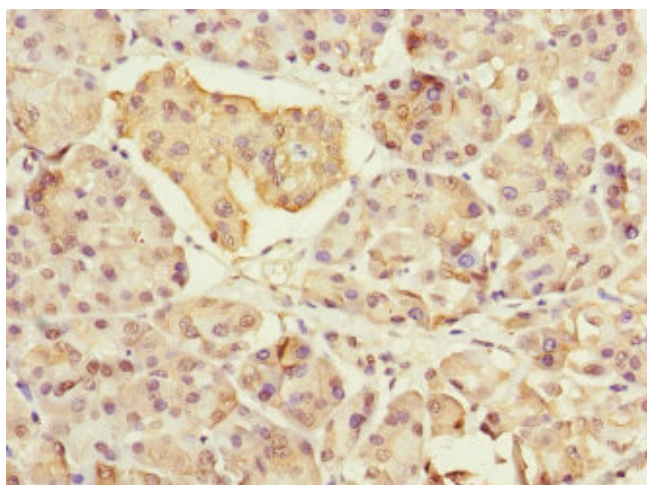
Product Type:	Primary Antibodies
Applications:	IHC, WB
Recommended Dilution:	Recommended dilution: WB:1:1000-1:5000, IHC:1:20-1:200
Reactivity:	Mouse, Human
Host:	Rabbit
Isotype:	IgG
Clonality:	Polyclonal
Immunogen:	Recombinant Human Myosin regulatory light chain 2, atrial isoform protein (1-175AA)
Formulation:	PBS with 0.02% sodium azide, 50% glycerol, pH7.3.
Concentration:	lot specific
Purification:	Antigen Affinity Purified
Conjugation:	Unconjugated
Storage:	Upon receipt, store at -20°C or -80°C. Avoid repeated freeze.
Stability:	1 year from dispatch.
Database Link:	<a href="#">Q01449</a>
Background:	A band, cytosol, myosin complex, muscle contraction



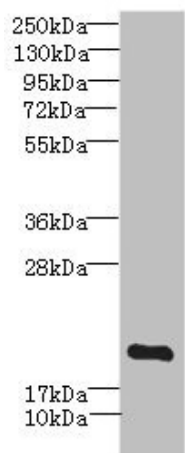
[View online »](#)

**Product images:**

Immunohistochemistry of paraffin-embedded human heart tissue using TA387888 at dilution of 1:100



Immunohistochemistry of paraffin-embedded human pancreatic tissue using TA387888 at dilution of 1:100



Western blot

All lanes: MYL7 antibody IgG at 2.69 $\mu$ g/ml +

Mouse skeletal muscle tissue

Secondary

Goat polyclonal to rabbit IgG at 1/10000 dilution

Predicted band size: 19 kDa

Observed band size: 19 kDa