

## Product datasheet for **TA387885M**

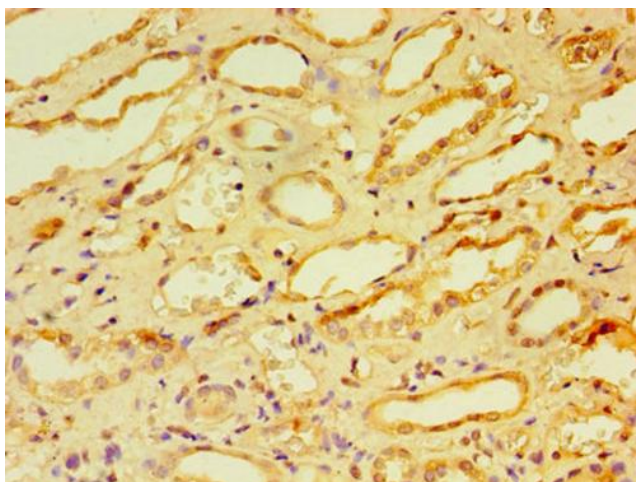
### CA12 Rabbit Polyclonal Antibody

#### Product data:

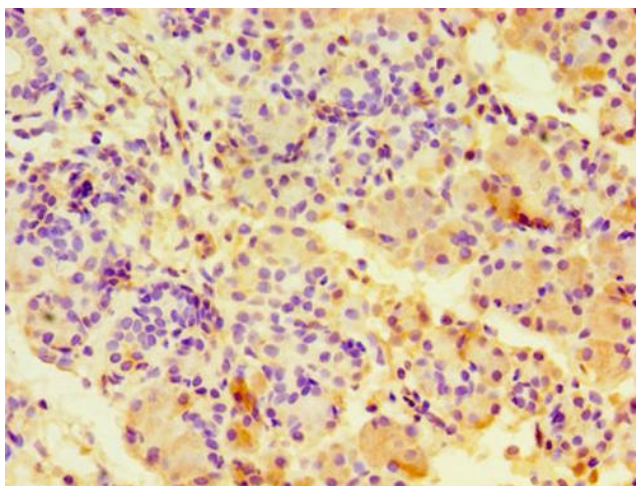
Product Type:	Primary Antibodies
Applications:	IHC, WB
Recommended Dilution:	Recommended dilution: WB:1:500-1:2000, IHC:1:20-1:200
Reactivity:	Mouse, Human
Host:	Rabbit
Isotype:	IgG
Clonality:	Polyclonal
Immunogen:	Recombinant Human Carbonic anhydrase 12 protein (25-301AA)
Formulation:	Preservative: 0.03% Proclin 300 Constituents: 50% Glycerol, 0.01M PBS, PH 7.4
Concentration:	lot specific
Purification:	>95%, Protein G purified
Conjugation:	Unconjugated
Storage:	Upon receipt, store at -20°C or -80°C. Avoid repeated freeze.
Stability:	1 year from dispatch.
Database Link:	<a href="#">Q43570</a>
Background:	Reversible hydration of carbon dioxide.



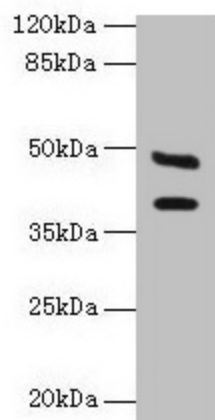
[View online »](#)

**Product images:**

Immunohistochemistry of paraffin-embedded human kidney tissue using [TA387885] at dilution of 1:100



Immunohistochemistry of paraffin-embedded human pancreatic tissue using [TA387885] at dilution of 1:100



Western blot  
 All lanes: CA12 antibody at 6µg/ml + Mouse  
 kidney tissue  
 Secondary  
 Goat polyclonal to rabbit IgG at 1/10000 dilution  
 Predicted band size: 40, 39 kDa  
 Observed band size: 40, 48 kDa