

Product datasheet for **TA387883M**

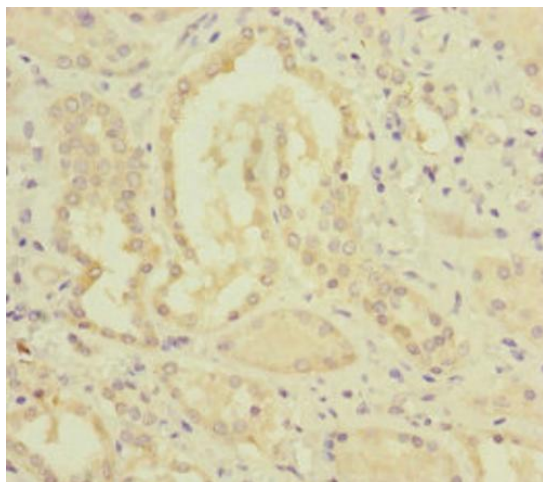
MMACHC Rabbit Polyclonal Antibody

Product data:

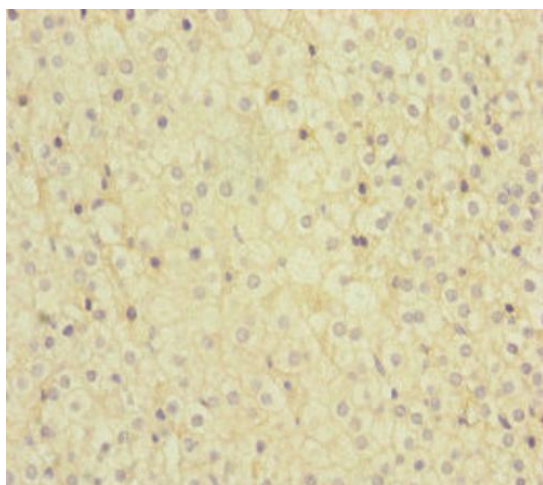
Product Type:	Primary Antibodies
Applications:	IHC, WB
Recommended Dilution:	Recommended dilution: WB:1:1000-1:5000, IHC:1:20-1:200
Reactivity:	Human
Host:	Rabbit
Isotype:	IgG
Clonality:	Polyclonal
Immunogen:	Recombinant Human Methylmalonic aciduria and homocystinuria type C protein (63-282AA)
Formulation:	PBS with 0.02% sodium azide, 50% glycerol, pH7.3.
Concentration:	lot specific
Purification:	Antigen Affinity Purified
Conjugation:	Unconjugated
Storage:	Upon receipt, store at -20°C or -80°C. Avoid repeated freeze.
Stability:	1 year from dispatch.
Database Link:	Q9Y4U1
Background:	May be involved in the binding and intracellular trafficking of cobalamin (vitamin B12).



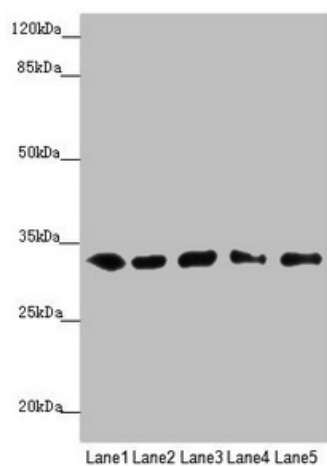
[View online »](#)

Product images:

Immunohistochemistry of paraffin-embedded human kidney tissue using [TA387883] at dilution of 1:100



Immunohistochemistry of paraffin-embedded human adrenal gland tissue using [TA387883] at dilution of 1:100



Western blot

All lanes: MMACHC antibody at 5.16µg/ml

Lane 1: HepG2 whole cell lysate

Lane 2: K562 whole cell lysate

Lane 3: A549 whole cell lysate

Lane 4: Hela whole cell lysate

Lane 5: Raji whole cell lysate

Secondary

Goat polyclonal to rabbit IgG at 1/10000 dilution

Predicted band size: 32 kDa

Observed band size: 32 kDa