

## Product datasheet for **TA387882M**

### CHN1 Rabbit Polyclonal Antibody

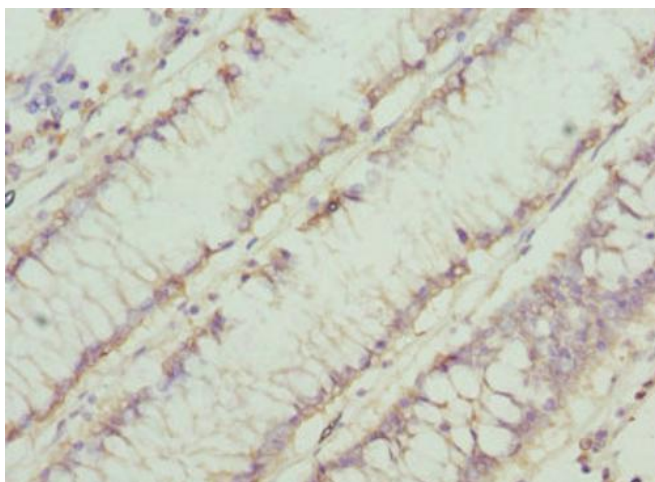
#### Product data:

Product Type:	Primary Antibodies
Applications:	IHC, WB
Recommended Dilution:	Recommended dilution: WB:1:1000-1:5000, IHC:1:20-1:200
Reactivity:	Human
Host:	Rabbit
Isotype:	IgG
Clonality:	Polyclonal
Immunogen:	Recombinant Human N-chimaerin protein (1-200AA)
Formulation:	PBS with 0.02% sodium azide, 50% glycerol, pH7.3.
Concentration:	lot specific
Purification:	Antigen Affinity Purified
Conjugation:	Unconjugated
Storage:	Upon receipt, store at -20°C or -80°C. Avoid repeated freeze.
Stability:	1 year from dispatch.
Database Link:	<a href="#">P15882</a>
Background:	GTPase-activating protein for p21-rac and a phorbol ester receptor. Involved in the assembly of neuronal locomotor circuits as a direct effector of EPHA4 in axon guidance.

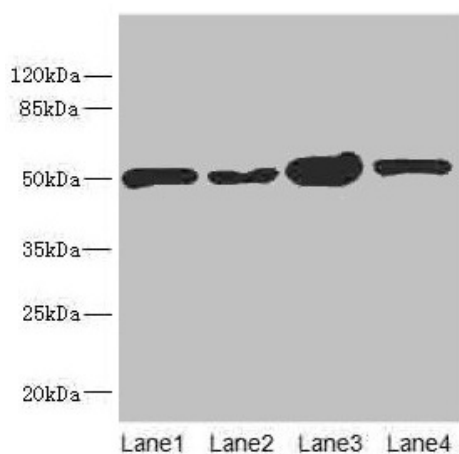


[View online »](#)

## Product images:



Immunohistochemistry of paraffin-embedded human colon cancer using [TA387882] at dilution of 1:100



### Western blot

All lanes: CHN1 antibody at 6.08 $\mu$ g/ml

Lane 1: 293T whole cell lysate

Lane 2: MCF-7 whole cell lysate

Lane 3: Jurkat whole cell lysate

Lane 4: Hela whole cell lysate

Secondary

Goat polyclonal to rabbit IgG at 1/10000 dilution

Predicted band size: 54, 39, 51 kDa

Observed band size: 51 kDa