

Product datasheet for **TA387879M**

RPS6KL1 Rabbit Polyclonal Antibody

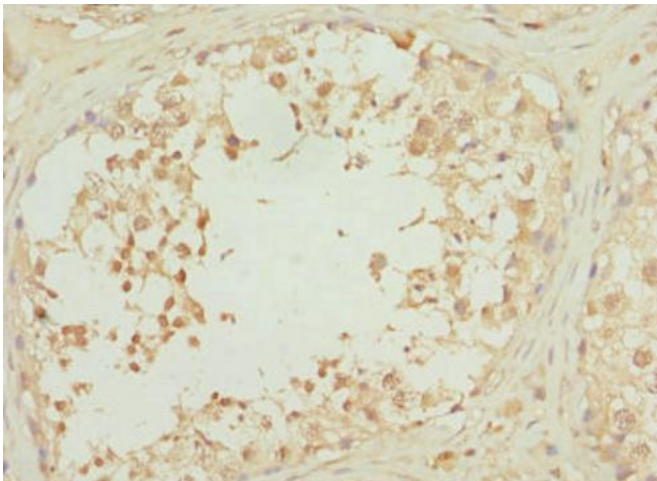
Product data:

Product Type:	Primary Antibodies
Applications:	IHC, WB
Recommended Dilution:	Recommended dilution: WB:1:1000-1:5000, IHC:1:20-1:200
Reactivity:	Mouse, Human
Host:	Rabbit
Isotype:	IgG
Clonality:	Polyclonal
Immunogen:	Recombinant Human Ribosomal protein S6 kinase-like 1 protein (1-130AA)
Formulation:	PBS with 0.02% sodium azide, 50% glycerol, pH7.3.
Concentration:	lot specific
Purification:	Antigen Affinity Purified
Conjugation:	Unconjugated
Storage:	Upon receipt, store at -20°C or -80°C. Avoid repeated freeze.
Stability:	1 year from dispatch.
Database Link:	Q9Y6S9
Background:	cytoplasm, intracellular membrane-bounded organelle, protein serine/threonine kinase activity, signal transduction

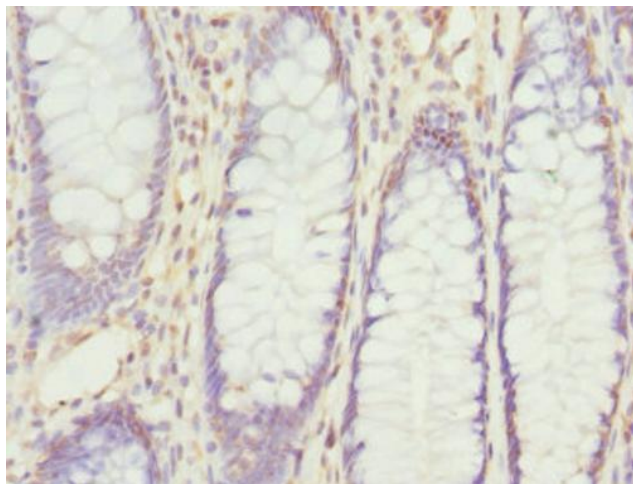


[View online »](#)

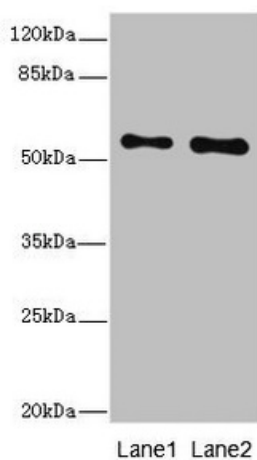
Product images:



Immunohistochemistry of paraffin-embedded human testis tissue using [TA387879] at dilution of 1:100



Immunohistochemistry of paraffin-embedded human colon cancer using [TA387879] at dilution of 1:100



Western blot

All lanes: RPS6KL1 antibody at 4.02µg/ml

Lane 1: Mouse heart tissue

Lane 2: Mouse kidney tissue

Secondary

Goat polyclonal to rabbit IgG at 1/10000 dilution

Predicted band size: 61, 60, 29 kDa

Observed band size: 61 kDa