

Product datasheet for **TA387869**

MRPS16 Rabbit Polyclonal Antibody

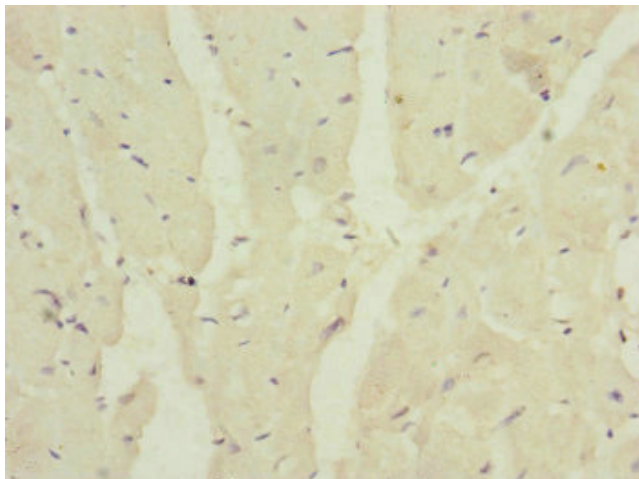
Product data:

Product Type:	Primary Antibodies
Applications:	IHC, WB
Recommended Dilution:	Recommended dilution: WB:1:1000-1:5000, IHC:1:20-1:200
Reactivity:	Human
Host:	Rabbit
Isotype:	IgG
Clonality:	Polyclonal
Immunogen:	Recombinant Human 28S ribosomal protein S16, mitochondrial protein (1-137AA)
Formulation:	PBS with 0.02% sodium azide, 50% glycerol, pH7.3.
Concentration:	lot specific
Purification:	Antigen Affinity Purified
Conjugation:	Unconjugated
Storage:	Upon receipt, store at -20°C or -80°C. Avoid repeated freeze.
Stability:	1 year from dispatch.
Database Link:	Q9Y3D3
Background:	cytoplasm, mitochondrial inner membrane, mitochondrial small ribosomal subunit, mitochondrion, structural constituent of ribosome, mitochondrial translation, mitochondrial translational elongation, mitochondrial translational termination, translation

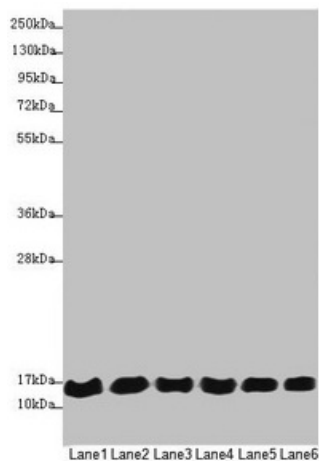


[View online »](#)

Product images:



Immunohistochemistry of paraffin-embedded human heart tissue using TA387869 at dilution of 1:100



Western blot
 All lanes: MRPS16 antibody at 1.12µg/ml
 Lane 1: 293T whole cell lysate
 Lane 2: Jurkat whole cell lysate
 Lane 3: Hela whole cell lysate
 Lane 4: MCF-7 whole cell lysate
 Lane 5: Raji whole cell lysate
 Lane 6: HepG2 whole cell lysate
 Secondary
 Goat polyclonal to rabbit IgG at 1/10000 dilution
 Predicted band size: 16, 14 kDa
 Observed band size: 16 kDa