

Product datasheet for **TA387868M**

MRPS16 Rabbit Polyclonal Antibody

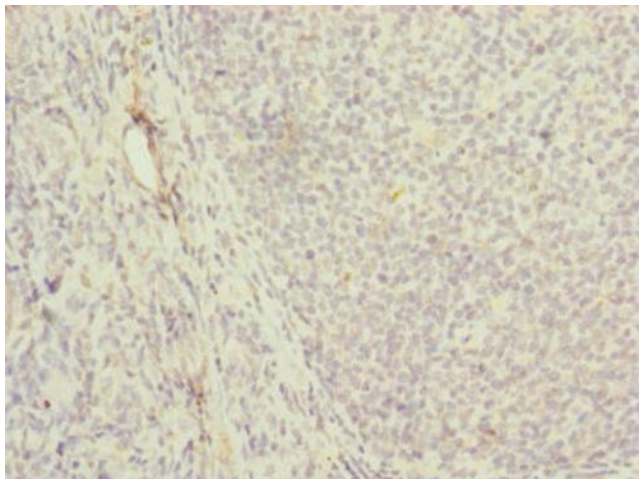
Product data:

Product Type:	Primary Antibodies
Applications:	IHC, WB
Recommended Dilution:	Recommended dilution: WB:1:1000-1:5000, IHC:1:20-1:200
Reactivity:	Mouse, Human
Host:	Rabbit
Isotype:	IgG
Clonality:	Polyclonal
Immunogen:	Recombinant Human 28S ribosomal protein S16, mitochondrial protein (1-137AA)
Formulation:	PBS with 0.02% sodium azide, 50% glycerol, pH7.3.
Concentration:	lot specific
Purification:	Antigen Affinity Purified
Conjugation:	Unconjugated
Storage:	Upon receipt, store at -20°C or -80°C. Avoid repeated freeze.
Stability:	1 year from dispatch.
Database Link:	Q9Y3D3
Background:	cytoplasm, mitochondrial inner membrane, mitochondrial small ribosomal subunit, mitochondrion, structural constituent of ribosome, mitochondrial translation, mitochondrial translational elongation, mitochondrial translational termination, translation

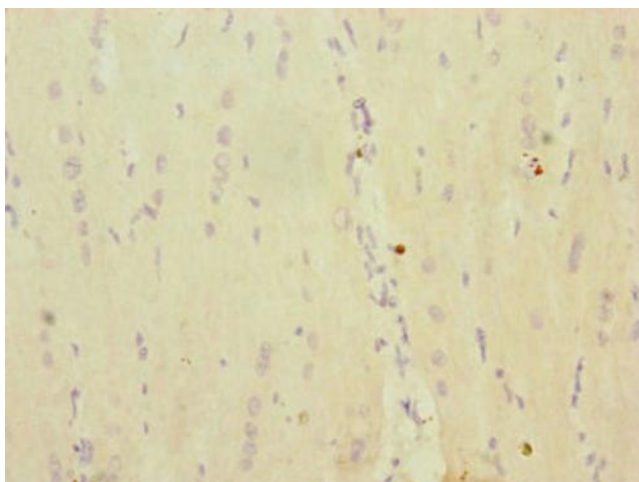


[View online »](#)

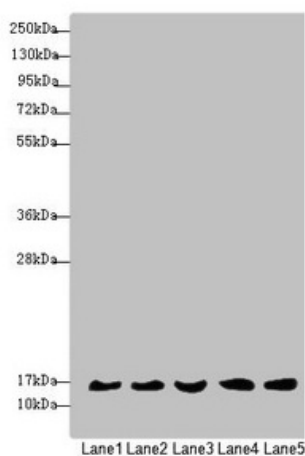
Product images:



Immunohistochemistry of paraffin-embedded human tonsil tissue using [TA387868] at dilution of 1:100



Immunohistochemistry of paraffin-embedded human heart tissue using [TA387868] at dilution of 1:100



Western blot

All lanes: MRPS16 antibody at 1.35µg/ml

Lane 1: Mouse liver tissue

Lane 2: 293T whole cell lysate

Lane 3: Jurkat whole cell lysate

Lane 4: Raji whole cell lysate

Lane 5: HepG2 whole cell lysate

Secondary

Goat polyclonal to rabbit IgG at 1/10000 dilution

Predicted band size: 16, 14 kDa

Observed band size: 16 kDa