

Product datasheet for **TA387867**

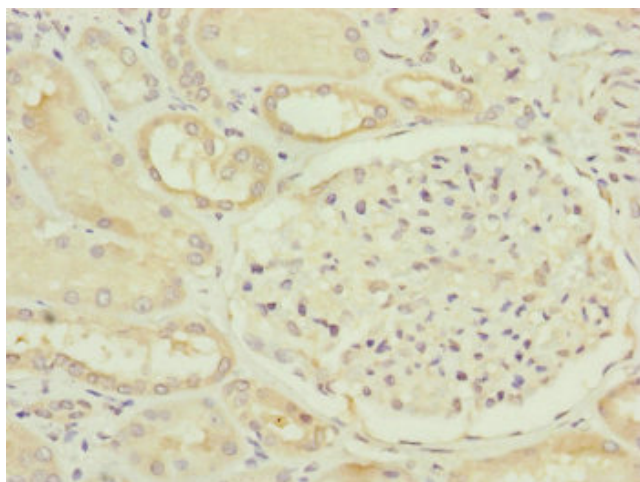
CIAO2B Rabbit Polyclonal Antibody

Product data:

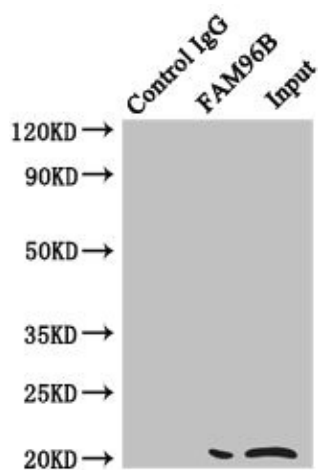
Product Type:	Primary Antibodies
Applications:	IHC, IP, WB
Recommended Dilution:	Recommended dilution: WB:1:1000-1:5000, IHC:1:20-1:200, IP:1:200-1:2000
Reactivity:	Mouse, Human
Host:	Rabbit
Isotype:	IgG
Clonality:	Polyclonal
Immunogen:	Recombinant Human Mitotic spindle-associated MMXD complex subunit MIP18 protein (1-163AA)
Formulation:	PBS with 0.02% sodium azide, 50% glycerol, pH7.3.
Concentration:	lot specific
Purification:	Antigen Affinity Purified
Conjugation:	Unconjugated
Storage:	Upon receipt, store at -20°C or -80°C. Avoid repeated freeze.
Stability:	1 year from dispatch.
Database Link:	Q9Y3D0
Background:	Component of the cytosolic iron-sulfur protein assembly (CIA) complex, a multiprotein complex that mediates the incorporation of iron-sulfur cluster into extramitochondrial Fe/S proteins. As part of the mitotic spindle-associated MMXD complex it plays a role in chromosome segregation, probably by facilitating iron-sulfur cluster assembly into ERCC2/XPD.



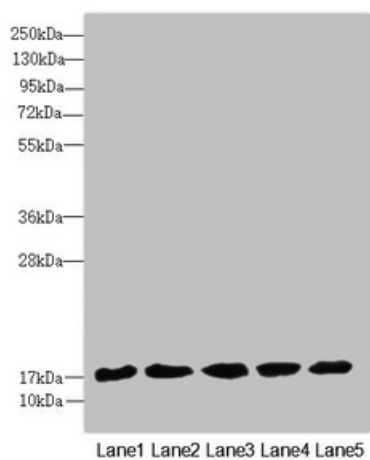
[View online »](#)

Product images:


Immunohistochemistry of paraffin-embedded human kidney tissue using TA387867 at dilution of 1:100



Immunoprecipitating FAM96B in Hela whole cell lysate
 Lane 1: Rabbit control IgG instead of (1µg) instead of TA387867 in Hela whole cell lysate. For western blotting, a HRP-conjugated anti-rabbit IgG, specific to the non-reduced form of IgG was used as the Secondary antibody (1/50000)
 Lane 2: TA387867 (4µg) + Hela whole cell lysate (500µg)
 Lane 3: Hela whole cell lysate (20µg)

**Western blot**

All lanes: FAM96B antibody at 7.09 μ g/ml

Lane 1: Mouse gonadal tissue

Lane 2: MCF-7 whole cell lysate

Lane 3: Hela whole cell lysate

Lane 4: K562 whole cell lysate

Lane 5: A375 whole cell lysate

Secondary

Goat polyclonal to rabbit IgG at 1/10000 dilution

Predicted band size: 18 kDa

Observed band size: 18 kDa