

Product datasheet for **TA387859**

MGAT4B Rabbit Polyclonal Antibody

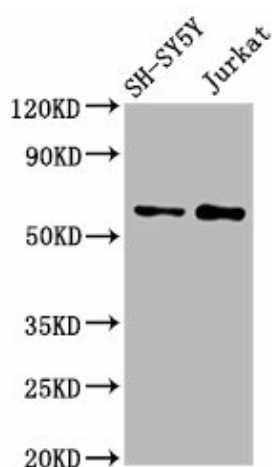
Product data:

Product Type:	Primary Antibodies
Applications:	IHC, WB
Recommended Dilution:	Recommended dilution: WB:1:500-1:5000, IHC:1:200-1:500
Reactivity:	Human
Host:	Rabbit
Isotype:	IgG
Clonality:	Polyclonal
Immunogen:	Recombinant Human Alpha-1,3-mannosyl-glycoprotein 4-beta-N-acetylglucosaminyltransferase B protein (380-522AA)
Formulation:	Preservative: 0.03% Proclin 300 Constituents: 50% Glycerol, 0.01M PBS, pH 7.4
Concentration:	lot specific
Purification:	>95%, Protein G purified
Conjugation:	Unconjugated
Storage:	Upon receipt, store at -20°C or -80°C. Avoid repeated freeze.
Stability:	1 year from dispatch.
Database Link:	Q9UQ53
Background:	Glycosyltransferase that participates in the transfer of N-acetylglucosamine (GlcNAc) to the core mannose residues of N-linked glycans. Catalyzes the formation of the GlcNAc β 1-4 branch on the GlcNAc β 1-2Man α 1-3 arm of the core structure of N-linked glycans. Essential for the production of tri- and tetra-antennary N-linked sugar chains. Has lower affinities for donors or acceptors than MGAT4A, suggesting that, under physiological conditions, it is not the main contributor in N-glycan biosynthesis.



[View online »](#)

Product images:



Western Blot

Positive WB detected in: SH-SY5Y whole cell lysate, Jurkat whole cell lysate

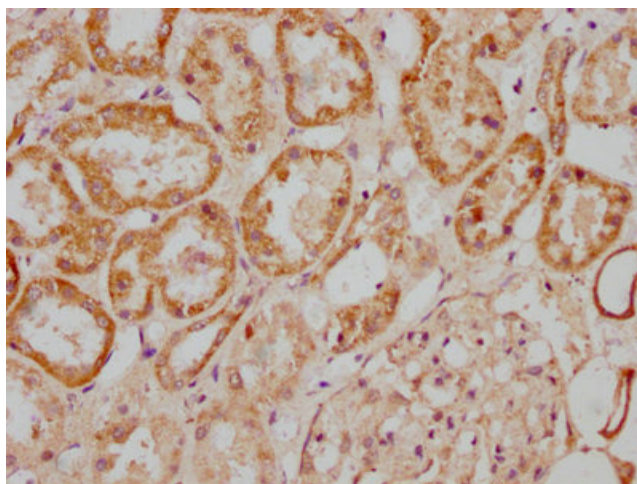
All lanes: MGAT4B antibody at 3 μ g/ml

Secondary

Goat polyclonal to rabbit IgG at 1/50000 dilution

Predicted band size: 64, 65 kDa

Observed band size: 64 kDa



IHC image of TA387859 diluted at 1:300 and staining in paraffin-embedded human kidney tissue performed on a Leica BondTM system. After dewaxing and hydration, antigen retrieval was mediated by high pressure in a citrate buffer (pH 6.0). Section was blocked with 10% normal goat serum 30min at RT. Then primary antibody (1% BSA) was incubated at 4°C overnight. The primary is detected by a biotinylated secondary antibody and visualized using an HRP conjugated SP system.