

Product datasheet for **TA387858M**

B9D1 Rabbit Polyclonal Antibody

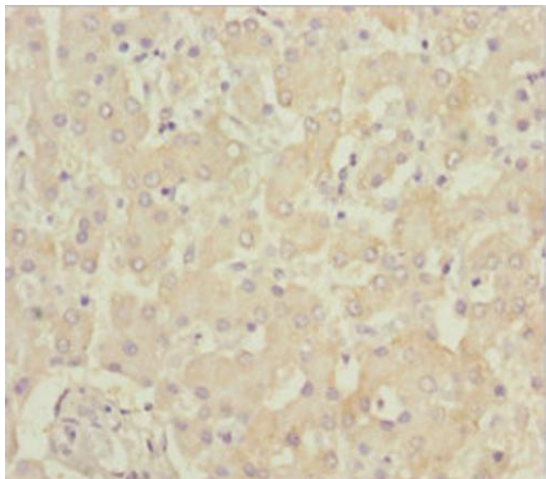
Product data:

Product Type:	Primary Antibodies
Applications:	IHC, WB
Recommended Dilution:	Recommended dilution: WB:1:1000-1:5000, IHC:1:20-1:200
Reactivity:	Mouse, Human
Host:	Rabbit
Isotype:	IgG
Clonality:	Polyclonal
Immunogen:	Recombinant Human B9 domain-containing protein 1 protein (1-130AA)
Formulation:	PBS with 0.02% sodium azide, 50% glycerol, pH7.3.
Concentration:	lot specific
Purification:	Antigen Affinity Purified
Conjugation:	Unconjugated
Storage:	Upon receipt, store at -20°C or -80°C. Avoid repeated freeze.
Stability:	1 year from dispatch.
Database Link:	Q9UPM9
Background:	Component of the tectonic-like complex, a complex localized at the transition zone of primary cilia and acting as a barrier that prevents diffusion of transmembrane proteins between the cilia and plasma membranes. Required for ciliogenesis and sonic hedgehog/SHH signaling (By similarity).

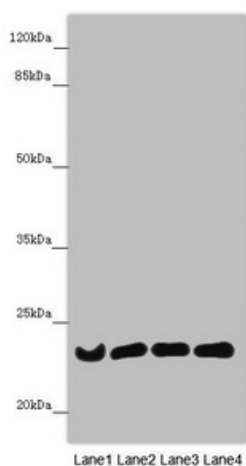


[View online »](#)

Product images:



Immunohistochemistry of paraffin-embedded human liver tissue using [TA387858] at dilution of 1:100



Western blot
All lanes: B9D1 antibody at 6.61µg/ml
Lane 1: Mouse lung tissue
Lane 2: Mouse gonadal tissue
Lane 3: HeLa whole cell lysate
Lane 4: 293T whole cell lysate
Secondary
Goat polyclonal to rabbit IgG at 1/10000 dilution
Predicted band size: 23, 17 kDa
Observed band size: 23 kDa