

## Product datasheet for **TA387857M**

### COG5 Rabbit Polyclonal Antibody

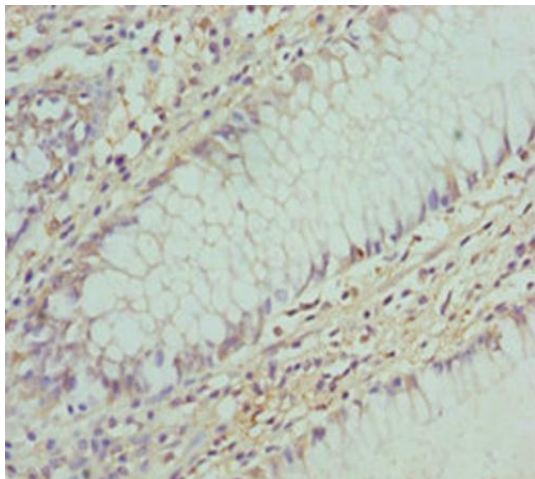
#### Product data:

Product Type:	Primary Antibodies
Applications:	IHC, WB
Recommended Dilution:	Recommended dilution: WB:1:1000-1:5000, IHC:1:20-1:200
Reactivity:	Mouse, Human
Host:	Rabbit
Isotype:	IgG
Clonality:	Polyclonal
Immunogen:	Recombinant Human Conserved oligomeric Golgi complex subunit 5 protein (1-260AA)
Formulation:	PBS with 0.02% sodium azide, 50% glycerol, pH7.3.
Concentration:	lot specific
Purification:	Antigen Affinity Purified
Conjugation:	Unconjugated
Storage:	Upon receipt, store at -20°C or -80°C. Avoid repeated freeze.
Stability:	1 year from dispatch.
Database Link:	<a href="#">Q9UP83</a>
Background:	Required for normal Golgi function.

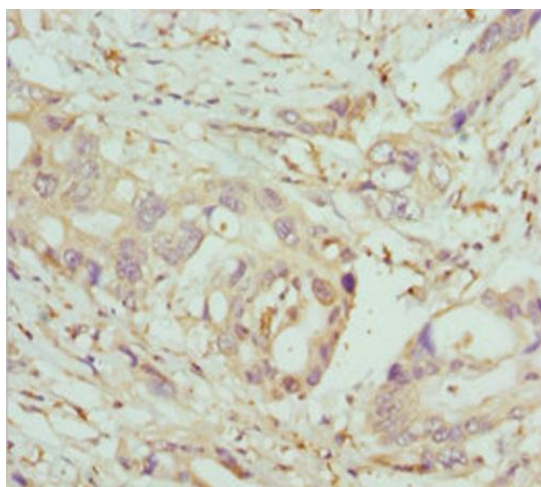


[View online »](#)

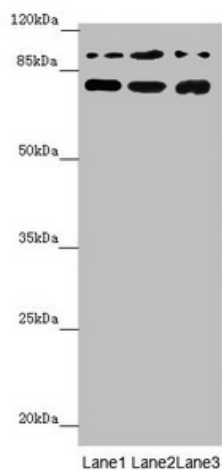
## Product images:



Immunohistochemistry of paraffin-embedded human colon cancer using [TA387857] at dilution of 1:100



Immunohistochemistry of paraffin-embedded human pancreatic cancer using [TA387857] at dilution of 1:100



#### Western blot

All lanes: COG5 antibody at 2.04 µg/ml

Lane 1: Mouse large intestine tissue

Lane 2: A549 whole cell lysate

Lane 3: 293T whole cell lysate

#### Secondary

Goat polyclonal to rabbit IgG at 1/10000 dilution

Predicted band size: 93, 95, 91 kDa

Observed band size: 93, 70 kDa