

Product datasheet for **TA387857**

COG5 Rabbit Polyclonal Antibody

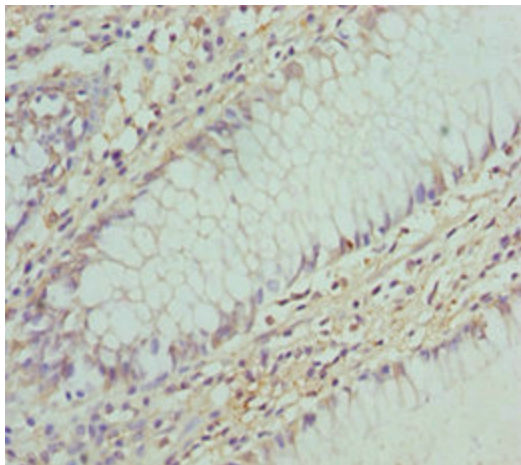
Product data:

Product Type:	Primary Antibodies
Applications:	IHC, WB
Recommended Dilution:	Recommended dilution: WB:1:1000-1:5000, IHC:1:20-1:200
Reactivity:	Mouse, Human
Host:	Rabbit
Isotype:	IgG
Clonality:	Polyclonal
Immunogen:	Recombinant Human Conserved oligomeric Golgi complex subunit 5 protein (1-260AA)
Formulation:	PBS with 0.02% sodium azide, 50% glycerol, pH7.3.
Concentration:	lot specific
Purification:	Antigen Affinity Purified
Conjugation:	Unconjugated
Storage:	Upon receipt, store at -20°C or -80°C. Avoid repeated freeze.
Stability:	1 year from dispatch.
Database Link:	Q9UP83
Background:	Required for normal Golgi function.

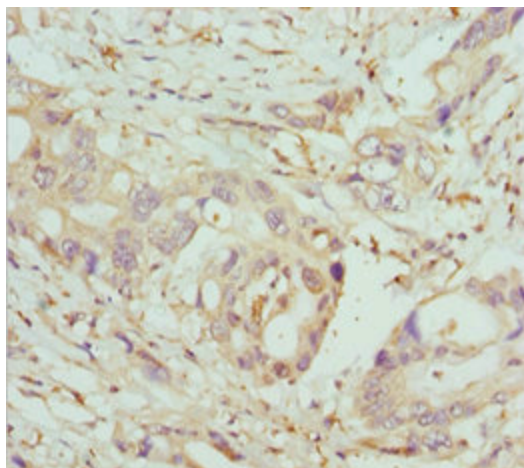


[View online »](#)

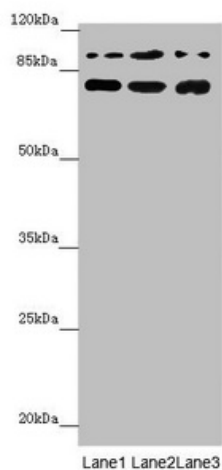
Product images:



Immunohistochemistry of paraffin-embedded human colon cancer using TA387857 at dilution of 1:100



Immunohistochemistry of paraffin-embedded human pancreatic cancer using TA387857 at dilution of 1:100



Western blot

All lanes: COG5 antibody at 2.04 $\mu\text{g}/\text{ml}$

Lane 1: Mouse large intestine tissue

Lane 2: A549 whole cell lysate

Lane 3: 293T whole cell lysate

Secondary

Goat polyclonal to rabbit IgG at 1/10000 dilution

Predicted band size: 93, 95, 91 kDa

Observed band size: 93, 70 kDa