

Product datasheet for **TA387856**

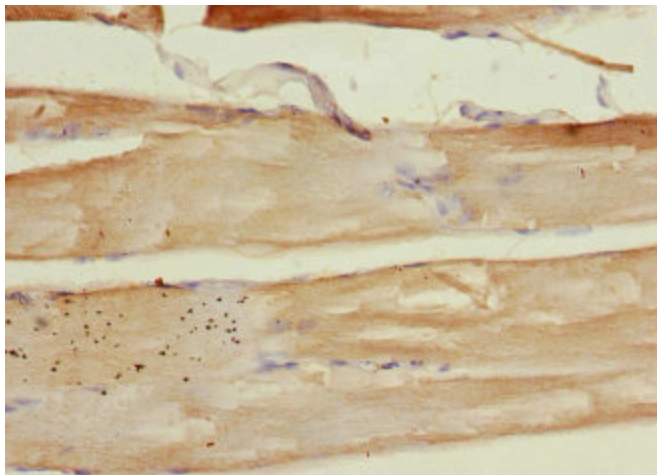
PLA2G4C Rabbit Polyclonal Antibody

Product data:

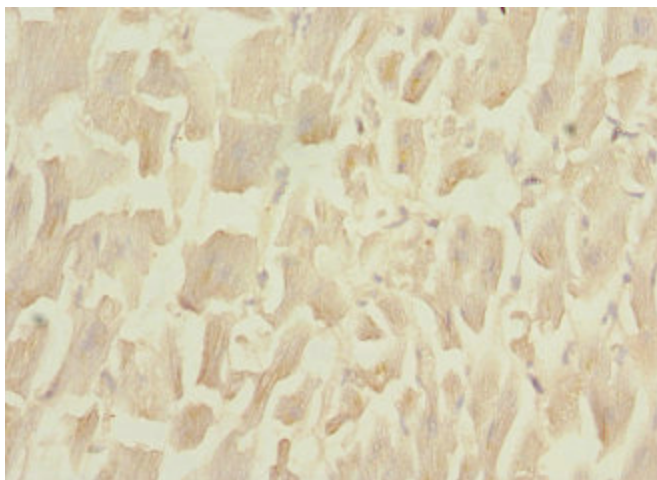
Product Type:	Primary Antibodies
Applications:	IHC, WB
Recommended Dilution:	Recommended dilution: WB:1:1000-1:5000, IHC:1:20-1:200
Reactivity:	Mouse, Human
Host:	Rabbit
Isotype:	IgG
Clonality:	Polyclonal
Immunogen:	Recombinant Human Cytosolic phospholipase A2 gamma protein (1-189AA)
Formulation:	PBS with 0.02% sodium azide, 50% glycerol, pH7.3.
Concentration:	lot specific
Purification:	Antigen Affinity Purified
Conjugation:	Unconjugated
Storage:	Upon receipt, store at -20°C or -80°C. Avoid repeated freeze.
Stability:	1 year from dispatch.
Database Link:	Q9UP65
Background:	Has a preference for arachidonic acid at the sn-2 position of phosphatidylcholine as compared with palmitic acid.



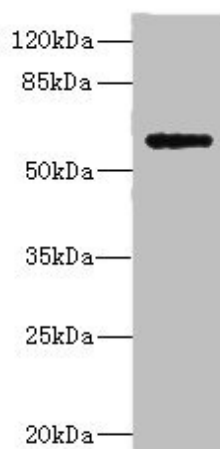
[View online »](#)

Product images:

Immunohistochemistry of paraffin-embedded human skeletal muscle tissue using TA387856 at dilution of 1:100



Immunohistochemistry of paraffin-embedded human heart tissue using TA387856 at dilution of 1:100



Western blot

All lanes: COX10 antibody at 5.84 μ g/ml + Mouse heart tissue

Secondary

Goat polyclonal to rabbit IgG at 1/10000 dilution

Predicted band size: 61, 60, 63 kDa

Observed band size: 61 kDa