

Product datasheet for **TA387852**

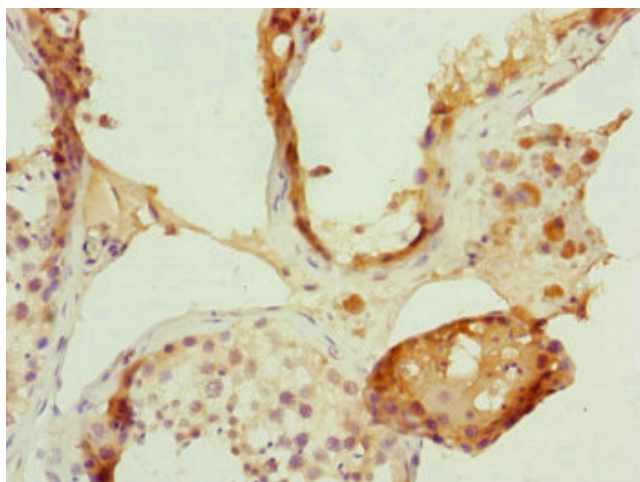
FBXL5 Rabbit Polyclonal Antibody

Product data:

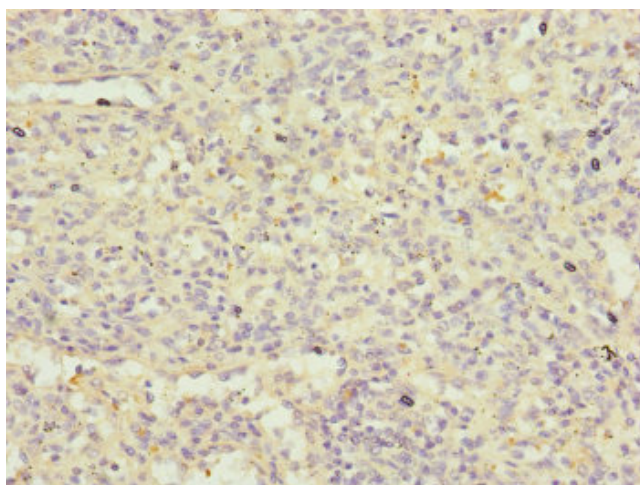
Product Type:	Primary Antibodies
Applications:	IHC, WB
Recommended Dilution:	Recommended dilution: WB:1:1000-1:5000, IHC:1:20-1:200
Reactivity:	Mouse, Human
Host:	Rabbit
Isotype:	IgG
Clonality:	Polyclonal
Immunogen:	Recombinant Human F-box/LRR-repeat protein 5 protein (1-310AA)
Formulation:	PBS with 0.02% sodium azide, 50% glycerol, pH7.3.
Concentration:	lot specific
Purification:	Antigen Affinity Purified
Conjugation:	Unconjugated
Storage:	Upon receipt, store at -20°C or -80°C. Avoid repeated freeze.
Stability:	1 year from dispatch.
Database Link:	Q9UKA1
Background:	Component of some SCF (SKP1-cullin-F-box) protein ligase complex that plays a central role in iron homeostasis by promoting the ubiquitination and subsequent degradation of IREB2/IRP2. Upon high iron and oxygen level, it specifically recognizes and binds IREB2/IRP2, promoting its ubiquitination and degradation by the proteasome. Promotes ubiquitination and subsequent degradation of DCTN1/p150-glued.



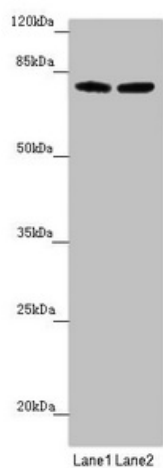
[View online »](#)

Product images:

Immunohistochemistry of paraffin-embedded human testis tissue using TA387852 at dilution of 1:100



Immunohistochemistry of paraffin-embedded human spleen tissue using TA387852 at dilution of 1:100



Western blot

All lanes: FBXL5 antibody at 1.51 $\mu\text{g/ml}$

Lane 1: Mouse lung tissue

Lane 2: Mouse gonadal tissue

Secondary

Goat polyclonal to rabbit IgG at 1/10000 dilution

Predicted band size: 79, 77 kDa

Observed band size: 79, 95 kDa