

Product datasheet for **TA387851M**

FBXO3 Rabbit Polyclonal Antibody

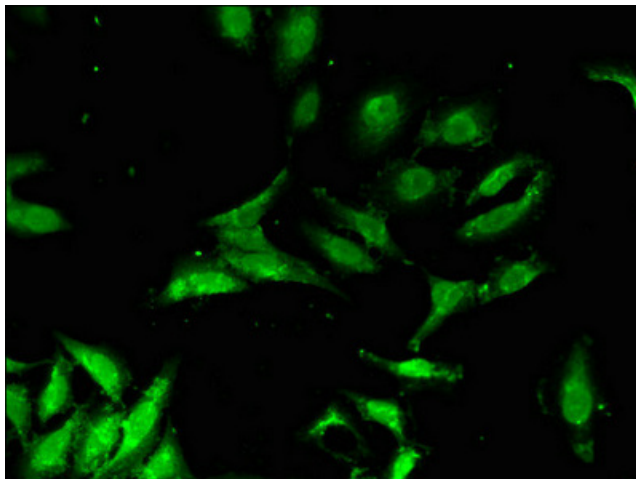
Product data:

Product Type:	Primary Antibodies
Applications:	IF, IHC, WB
Recommended Dilution:	Recommended dilution: WB:1:200-1:5000, IHC:1:20-1:200, IF:1:50-1:200
Reactivity:	Mouse, Human
Host:	Rabbit
Isotype:	IgG
Clonality:	Polyclonal
Immunogen:	Recombinant Human F-box only protein 3 protein (276-376AA)
Formulation:	Preservative: 0.03% Proclin 300 Constituents: 50% Glycerol, 0.01M PBS, pH 7.4
Concentration:	lot specific
Purification:	>95%, Protein G purified
Conjugation:	Unconjugated
Storage:	Upon receipt, store at -20°C or -80°C. Avoid repeated freeze.
Stability:	1 year from dispatch.
Database Link:	Q9UK99
Background:	Substrate recognition component of the SCF (SKP1-CUL1-F-box protein)-type E3 ubiquitin ligase complex. Mediates the ubiquitination of HIPK2 and probably that of EP300, leading to rapid degradation by the proteasome. In the presence of PML, HIPK2 ubiquitination still occurs, but degradation is prevented. PML, HIPK2 and FBXO3 may act synergically to activate p53/TP53-dependent transactivation.

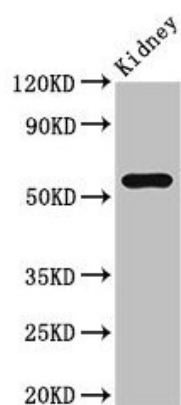


[View online »](#)

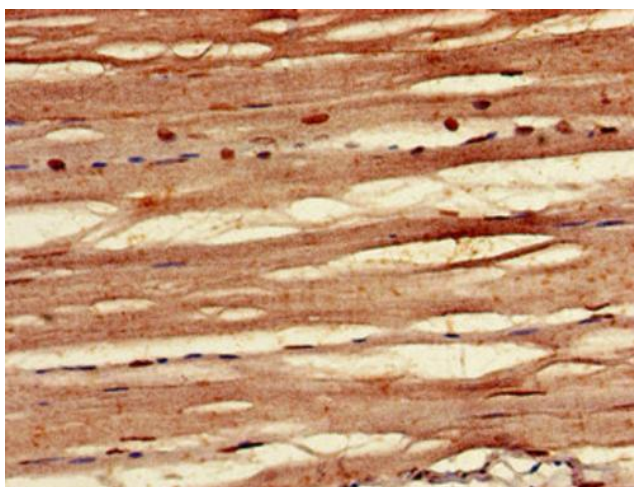
Product images:



Immunofluorescent analysis of HeLa cells using [TA387851] at dilution of 1:100 and Alexa Fluor 488-conjugated AffiniPure Goat Anti-Rabbit IgG(H+L)



Western Blot
Positive WB detected in: Mouse kidney tissue
All lanes: FBXO3 antibody at 4µg/ml
Secondary
Goat polyclonal to rabbit IgG at 1/50000 dilution
Predicted band size: 55, 48, 47 kDa
Observed band size: 55 kDa



Immunohistochemistry of paraffin-embedded human skeletal muscle tissue using [TA387851] at dilution of 1:100