

Product datasheet for **TA387849M**

BTNL2 Rabbit Polyclonal Antibody

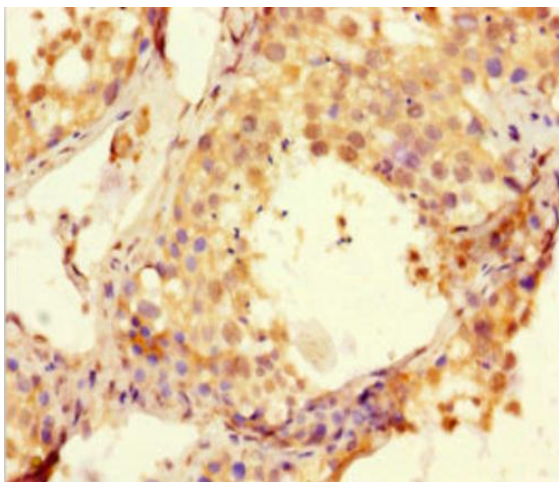
Product data:

Product Type:	Primary Antibodies
Applications:	IHC, WB
Recommended Dilution:	Recommended dilution: WB:1:2000-1:10000, IHC:1:20-1:200
Reactivity:	Mouse, Human
Host:	Rabbit
Isotype:	IgG
Clonality:	Polyclonal
Immunogen:	Recombinant Human Butyrophilin-like protein 2 protein (26-202AA)
Formulation:	Preservative: 0.03% Proclin 300 Constituents: 50% Glycerol, 0.01M PBS, PH 7.4
Concentration:	lot specific
Purification:	>95%, Protein G purified
Conjugation:	Unconjugated
Storage:	Upon receipt, store at -20°C or -80°C. Avoid repeated freeze.
Stability:	1 year from dispatch.
Database Link:	Q9UIR0
Background:	Negative regulator of T-cell proliferation.

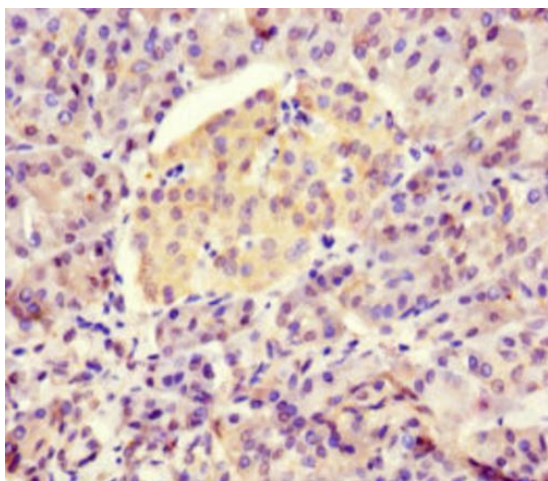


[View online »](#)

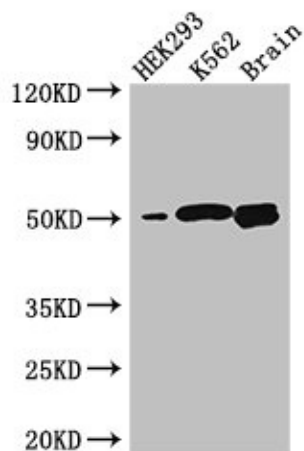
Product images:



Immunohistochemistry of paraffin-embedded human testis tissue using [TA387849] at dilution of 1:100



Immunohistochemistry of paraffin-embedded human pancreatic tissue using [TA387849] at dilution of 1:100



Western Blot

Positive WB detected in: HEK293 whole cell lysate, K562 whole cell lysate, Mouse brain tissue
All lanes: BTNL2 antibody at 3.2µg/ml

Secondary

Goat polyclonal to rabbit IgG at 1/50000 dilution
Predicted band size: 51, 44, 31, 28, 20, 29 kDa
Observed band size: 51 kDa