

Product datasheet for **TA387848**

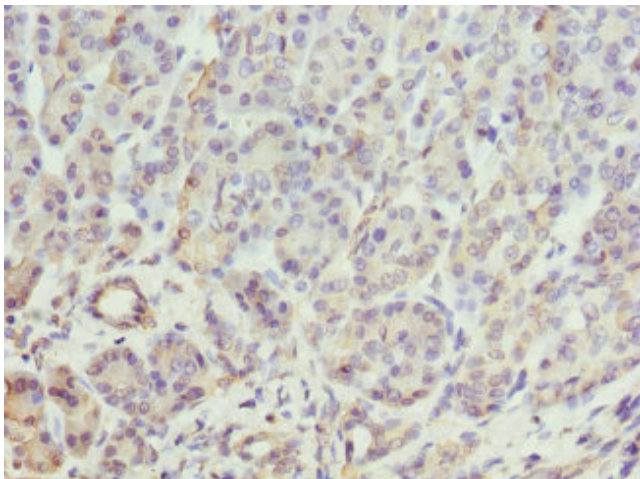
BTNL2 Rabbit Polyclonal Antibody

Product data:

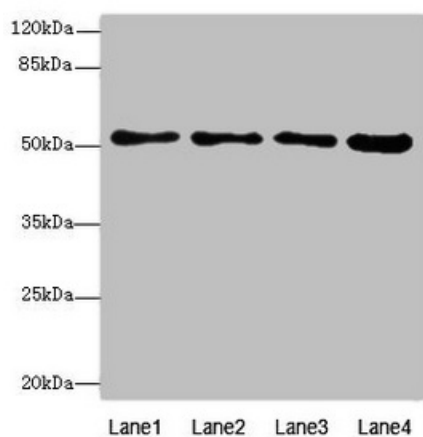
Product Type:	Primary Antibodies
Applications:	IHC, WB
Recommended Dilution:	Recommended dilution: WB:1:1000-1:5000, IHC:1:20-1:200
Reactivity:	Mouse, Human
Host:	Rabbit
Isotype:	IgG
Clonality:	Polyclonal
Immunogen:	Recombinant Human Butyrophilin-like protein 2 protein (246-455AA)
Formulation:	PBS with 0.02% sodium azide, 50% glycerol, pH7.3.
Concentration:	lot specific
Purification:	Antigen Affinity Purified
Conjugation:	Unconjugated
Storage:	Upon receipt, store at -20°C or -80°C. Avoid repeated freeze.
Stability:	1 year from dispatch.
Database Link:	Q9UIR0
Background:	Negative regulator of T-cell proliferation.



[View online »](#)

Product images:

Immunohistochemistry of paraffin-embedded human pancreatic tissue using TA387848 at dilution of 1:100

**Western blot**

All lanes: BTNL2 antibody at 4.12 μ g/ml

Lane 1: Mouse small intestine tissue

Lane 2: K562 whole cell lysate

Lane 3: HepG2 whole cell lysate

Lane 4: HL60 whole cell lysate

Secondary

Goat polyclonal to rabbit IgG at 1/10000 dilution

Predicted band size: 51, 44, 31, 28, 20, 29 kDa

Observed band size: 51 kDa