

## Product datasheet for **TA387847M**

### SLC23A1 Rabbit Polyclonal Antibody

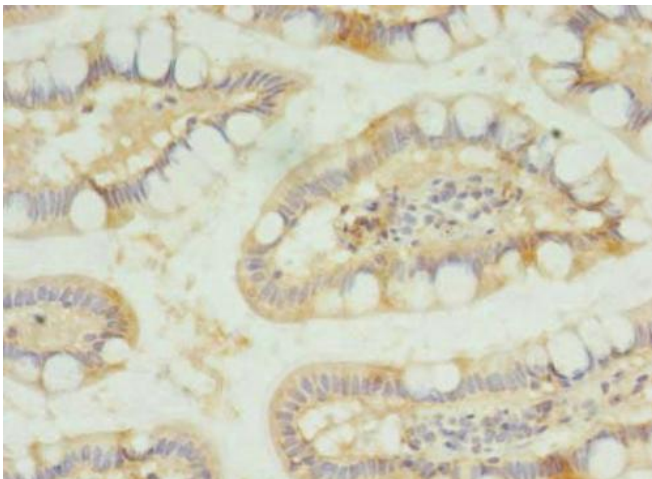
#### Product data:

Product Type:	Primary Antibodies
Applications:	IF, IHC, WB
Recommended Dilution:	Recommended dilution: WB:1:500-1:2000, IHC:1:20-1:200, IF:1:50-1:200
Reactivity:	Mouse, Human
Host:	Rabbit
Isotype:	IgG
Clonality:	Polyclonal
Immunogen:	Recombinant Human Solute carrier family 23 member 1 protein (173-259AA)
Formulation:	Preservative: 0.03% Proclin 300 Constituents: 50% Glycerol, 0.01M PBS, PH 7.4
Concentration:	lot specific
Purification:	>95%, Protein G purified
Conjugation:	Unconjugated
Storage:	Upon receipt, store at -20°C or -80°C. Avoid repeated freeze.
Stability:	1 year from dispatch.
Database Link:	<a href="#">Q9UHI7</a>
Background:	Sodium/ascorbate cotransporter. Mediates electrogenic uptake of vitamin C, with a stoichiometry of 2 Na(+) for each ascorbate.

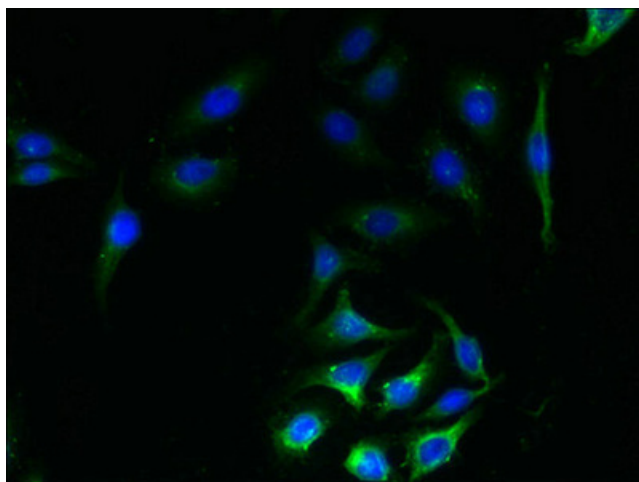


[View online »](#)

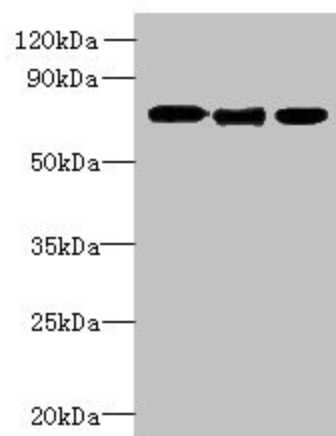
## Product images:



Immunohistochemistry of paraffin-embedded human small intestine tissue using [TA387847] at dilution of 1:100



Immunofluorescent analysis of A549 cells using [TA387847] at dilution of 1:100 and Alexa Fluor 488-conjugated AffiniPure Goat Anti-Rabbit IgG(H+L)



## Western blot

All lanes: SLC23A1 antibody at 3 $\mu$ g/ml

Lane 1: A549 whole cell lysate

Lane 2: Mouse liver tissue

Lane 3: Mouse kidney tissue

Secondary

Goat polyclonal to rabbit IgG at 1/10000 dilution

Predicted band size: 65, 66, 29 kDa

Observed band size: 65 kDa