

## Product datasheet for **TA387845**

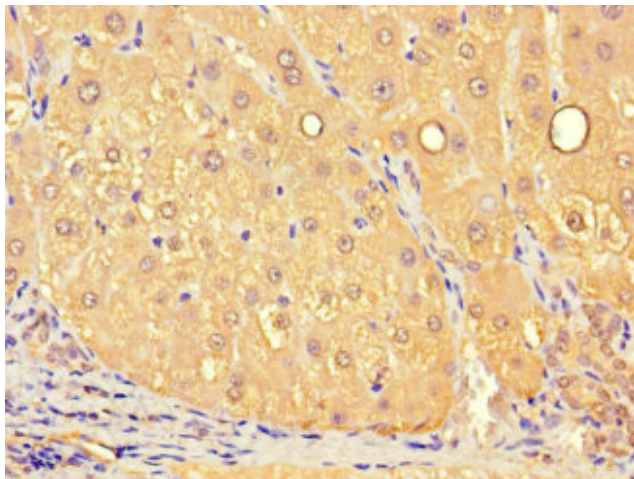
### SLC25A10 Rabbit Polyclonal Antibody

#### Product data:

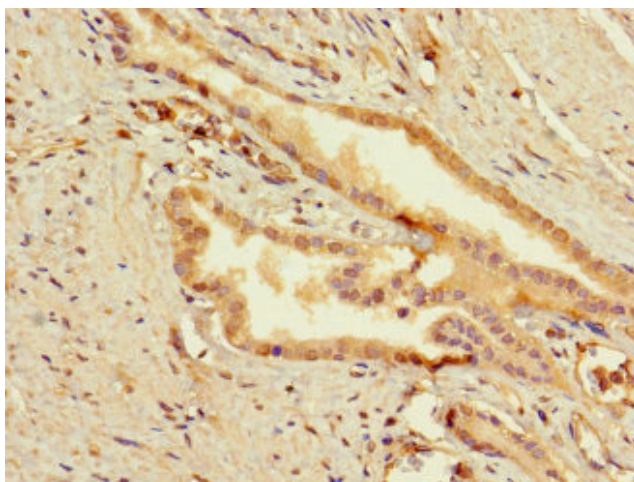
Product Type:	Primary Antibodies
Applications:	IHC, WB
Recommended Dilution:	Recommended dilution: WB:1:1000-1:5000, IHC:1:20-1:200
Reactivity:	Mouse, Human
Host:	Rabbit
Isotype:	IgG
Clonality:	Polyclonal
Immunogen:	Recombinant Human Mitochondrial dicarboxylate carrier protein (124-162AA)
Formulation:	Preservative: 0.03% Proclin 300 Constituents: 50% Glycerol, 0.01M PBS, PH 7.4
Concentration:	lot specific
Purification:	>95%, Protein G purified
Conjugation:	Unconjugated
Storage:	Upon receipt, store at -20°C or -80°C. Avoid repeated freeze.
Stability:	1 year from dispatch.
Database Link:	<a href="#">Q9UBX3</a>
Background:	Involved in translocation of malonate, malate and succinate in exchange for phosphate, sulfate, sulfite or thiosulfate across mitochondrial inner membrane.



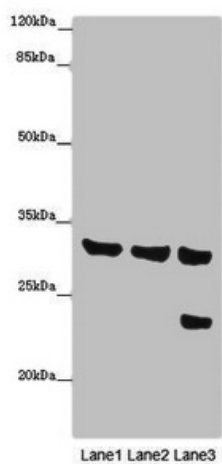
[View online »](#)

**Product images:**

Immunohistochemistry of paraffin-embedded human liver tissue using TA387845 at dilution of 1:100



Immunohistochemistry of paraffin-embedded human prostate cancer using TA387845 at dilution of 1:100

**Western blot**

All lanes: SLC25A10 antibody at 16 $\mu$ g/ml

Lane 1: Mouse liver tissue

Lane 2: Mouse kidney tissue

Lane 3: HepG2 whole cell lysate

**Secondary**

Goat polyclonal to rabbit IgG at 1/10000 dilution

Predicted band size: 32, 33 kDa

Observed band size: 32, 24 kDa