

Product datasheet for **TA387838**

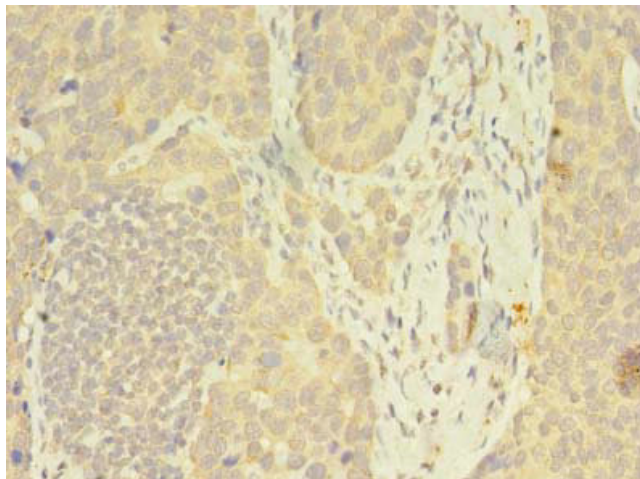
FKBP11 Rabbit Polyclonal Antibody

Product data:

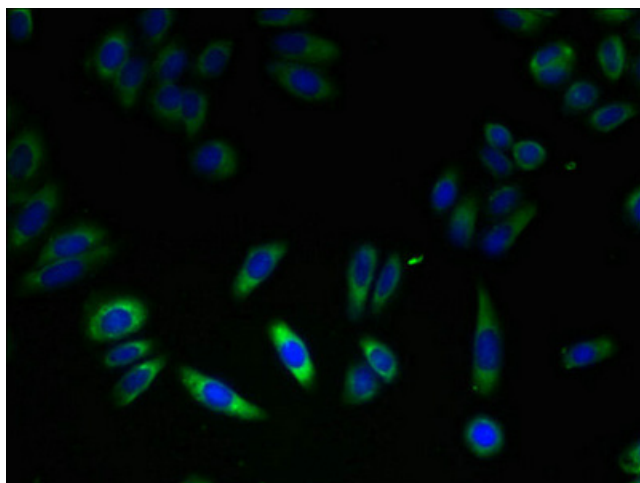
Product Type:	Primary Antibodies
Applications:	IF, IHC, WB
Recommended Dilution:	Recommended dilution: WB:1:500-1:2000, IHC:1:20-1:200, IF:1:50-1:200
Reactivity:	Mouse, Human
Host:	Rabbit
Isotype:	IgG
Clonality:	Polyclonal
Immunogen:	Recombinant Human Peptidyl-prolyl cis-trans isomerase FKBP11 protein (28-154AA)
Formulation:	Preservative: 0.03% Proclin 300 Constituents: 50% Glycerol, 0.01M PBS, PH 7.4
Concentration:	lot specific
Purification:	>95%, Protein G purified
Conjugation:	Unconjugated
Storage:	Upon receipt, store at -20°C or -80°C. Avoid repeated freeze.
Stability:	1 year from dispatch.
Database Link:	Q9NYL4
Background:	PPIases accelerate the folding of proteins during protein synthesis.



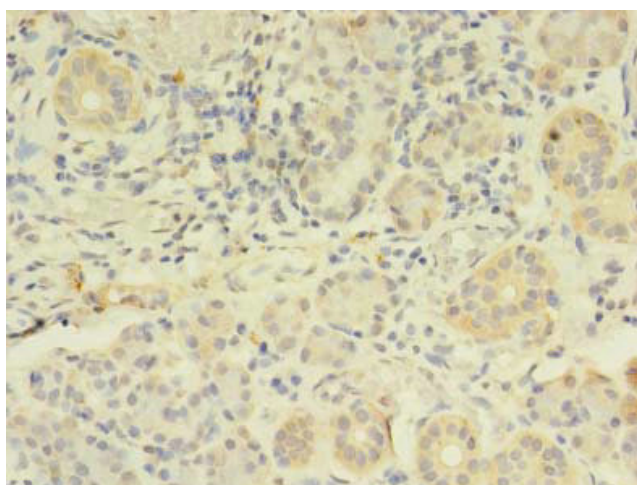
[View online »](#)

Product images:

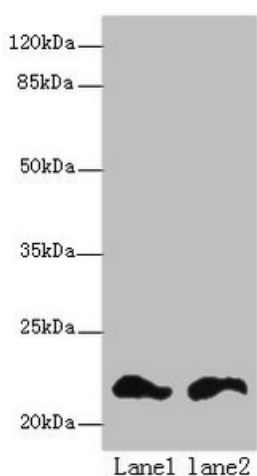
Immunohistochemistry of paraffin-embedded human gastric cancer using TA387838 at dilution of 1:100



Immunofluorescent analysis of HepG2 cells using TA387838 at dilution of 1:100 and Alexa Fluor 488-conjugated AffiniPure Goat Anti-Rabbit IgG(H+L)



Immunohistochemistry of paraffin-embedded human pancreatic tissue using TA387838 at dilution of 1:100



Western blot
 All lanes: FKBP11 antibody at 6µg/ml
 Lane 1: Mouse spleen tissue
 Lane 2: Mouse liver tissue
 Secondary
 Goat polyclonal to rabbit IgG at 1/10000 dilution
 Predicted band size: 23, 16 kDa
 Observed band size: 23 kDa