

Product datasheet for **TA387837**

SMPD3 Rabbit Polyclonal Antibody

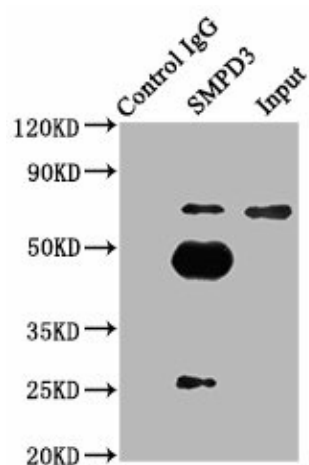
Product data:

Product Type:	Primary Antibodies
Applications:	IHC, IP
Recommended Dilution:	Recommended dilution: IHC:1:50-1:200, IP:1:200-1:2000
Reactivity:	Mouse, Human
Host:	Rabbit
Isotype:	IgG
Clonality:	Polyclonal
Immunogen:	Recombinant Human Sphingomyelin phosphodiesterase 3 protein (401-655AA)
Formulation:	Preservative: 0.03% Proclin 300 Constituents: 50% Glycerol, 0.01M PBS, PH 7.4
Concentration:	lot specific
Purification:	>95%, Protein G purified
Conjugation:	Unconjugated
Storage:	Upon receipt, store at -20°C or -80°C. Avoid repeated freeze.
Stability:	1 year from dispatch.
Database Link:	Q9NY59
Background:	Catalyzes the hydrolysis of sphingomyelin to form ceramide and phosphocholine. Ceramide mediates numerous cellular functions, such as apoptosis and growth arrest, and is capable of regulating these 2 cellular events independently. Also hydrolyzes sphingosylphosphocholine. Regulates the cell cycle by acting as a growth suppressor in confluent cells. Probably acts as a regulator of postnatal development and participates in bone and dentin mineralization.



[View online »](#)

Product images:

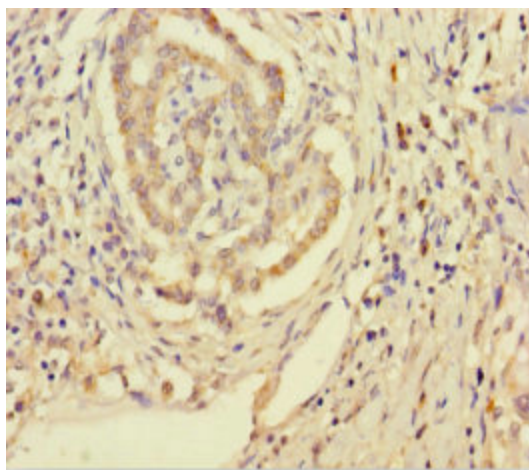


Immunoprecipitating SMPD3 in mouse brain whole cell lysate

Lane 1: Rabbit control IgG (1 μ g) instead of TA387837 in mouse brain whole cell lysate. For western blotting, a HRP-conjugated Protein G antibody was used as the secondary antibody (1/2000)

Lane 2: TA387837 (6 μ g) + Mouse brain whole cell lysate (500 μ g)

Lane 3: Mouse brain whole cell lysate (10 μ g)



Immunohistochemistry of paraffin-embedded human pancreatic cancer using TA387837 at dilution of 1:100