

## Product datasheet for **TA387835**

### PIH1D1 Rabbit Polyclonal Antibody

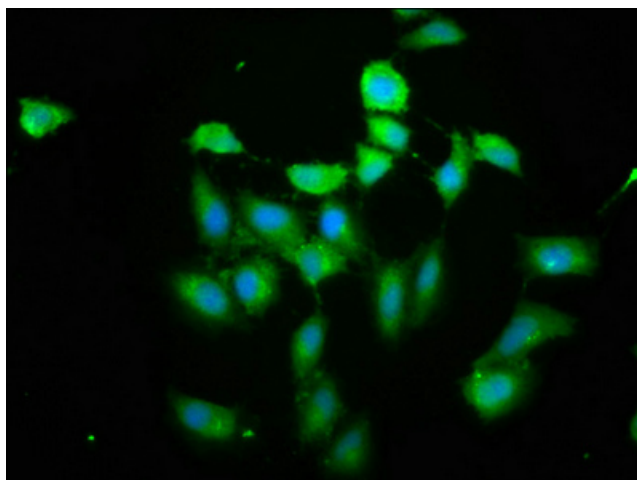
#### Product data:

Product Type:	Primary Antibodies
Applications:	IF, IHC, IP
Recommended Dilution:	Recommended dilution: IHC:1:20-1:200, IF:1:50-1:500, IP:1:200-1:2000
Reactivity:	Human
Host:	Rabbit
Isotype:	IgG
Clonality:	Polyclonal
Immunogen:	Recombinant Human PIH1 domain-containing protein 1 protein (1-290AA)
Formulation:	Preservative: 0.03% Proclin 300 Constituents: 50% Glycerol, 0.01M PBS, PH 7.4
Concentration:	lot specific
Purification:	>95%, Protein G purified
Conjugation:	Unconjugated
Storage:	Upon receipt, store at -20°C or -80°C. Avoid repeated freeze.
Stability:	1 year from dispatch.
Database Link:	<a href="#">Q9NWS0</a>
Background:	Involved in the assembly of C/D box small nucleolar ribonucleoprotein (snoRNP) particles (PubMed:17636026). Recruits the SWI/SNF complex to the core promoter of rRNA genes and enhances pre-rRNA transcription (PubMed:22368283, PubMed:24036451). Mediates interaction of TELO2 with the R2TP complex which is necessary for the stability of MTOR and SMG1 (PubMed:20864032). Positively regulates the assembly and activity of the mTORC1 complex (PubMed:24036451).

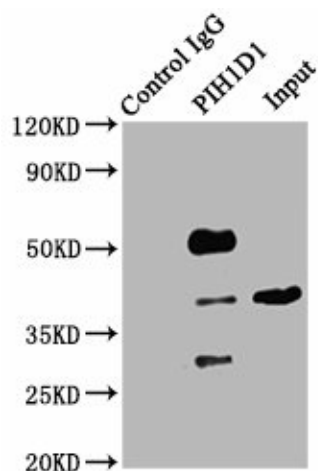


[View online »](#)

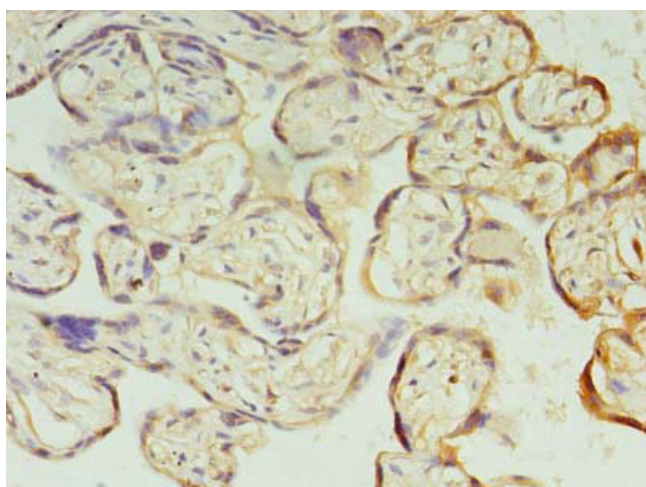
**Product images:**



Immunofluorescence staining of HeLa cells cells with TA387835 at 1: 200, counter-stained with DAPI. The cells were fixed in 4% formaldehyde, permeabilized tissue using 0.2% Triton X-100 and blocked in 10% normal Goat Serum. The cells were then incubated with the antibody overnight at 4°C. The secondary antibody was Alexa Fluor 488-conjugated AffiniPure Goat Anti-Rabbit IgG(H+L) .



Immunoprecipitating PIH1D1 in HeLa whole cell lysate  
 Lane 1: Rabbit control IgG (1µg) instead of TA387835 in HeLa whole cell lysate. For western blotting, a HRP-conjugated Protein G antibody was used as the secondary antibody (1/2000)  
 Lane 2: TA387835 (6µg) + HeLa whole cell lysate (500µg)  
 Lane 3: HeLa whole cell lysate (10µg)



Immunohistochemistry of paraffin-embedded human placenta tissue using TA387835 at dilution of 1:100