

Product datasheet for **TA387834M**

ARL8B Rabbit Polyclonal Antibody

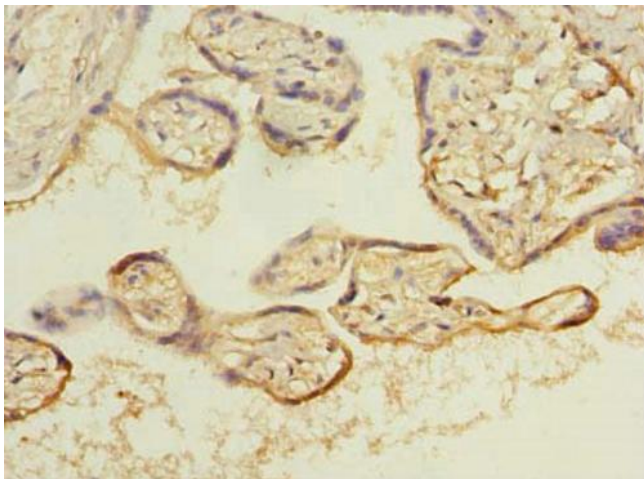
Product data:

| | |
|-----------------------|--|
| Product Type: | Primary Antibodies |
| Applications: | IHC, WB |
| Recommended Dilution: | Recommended dilution: WB:1:500-1:2000, IHC:1:20-1:200 |
| Reactivity: | Mouse, Human |
| Host: | Rabbit |
| Isotype: | IgG |
| Clonality: | Polyclonal |
| Immunogen: | Recombinant Human ADP-ribosylation factor-like protein 8B protein (20-186AA) |
| Formulation: | Preservative: 0.03% Proclin 300 Constituents: 50% Glycerol, 0.01M PBS, PH 7.4 |
| Concentration: | lot specific |
| Purification: | >95%, Protein G purified |
| Conjugation: | Unconjugated |
| Storage: | Upon receipt, store at -20°C or -80°C. Avoid repeated freeze. |
| Stability: | 1 year from dispatch. |
| Database Link: | Q9NVJ2 |
| Background: | May play a role in lysosome motility (PubMed:16537643). May play a role in chromosome segregation (PubMed:15331635). |

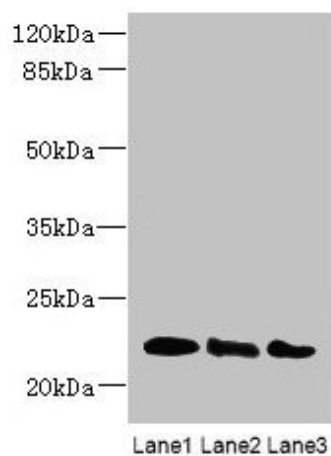


[View online »](#)

Product images:



Immunohistochemistry of paraffin-embedded human placenta tissue using [TA387834] at dilution of 1:100



Western blot
All lanes: ARL8B antibody at 4 μ g/ml
Lane 1: Mouse brain tissue
Lane 2: NIH/3T3 whole cell lysate
Lane 3: Jurkat whole cell lysate
Secondary
Goat polyclonal to rabbit IgG at 1/10000 dilution
Predicted band size: 22, 19 kDa
Observed band size: 22 kDa