

Product datasheet for **TA387833**

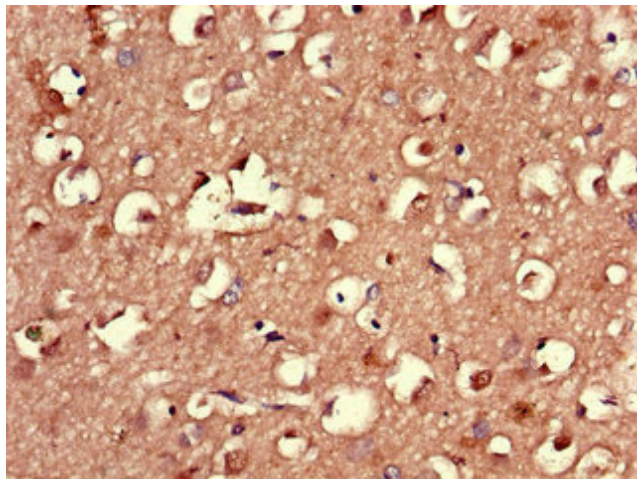
LMBRD1 Rabbit Polyclonal Antibody

Product data:

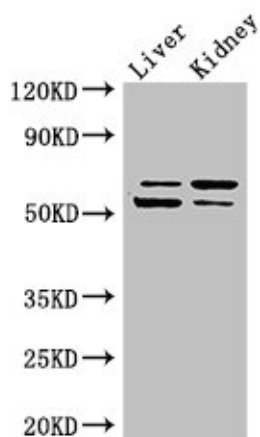
Product Type:	Primary Antibodies
Applications:	IHC, WB
Recommended Dilution:	Recommended dilution: WB:1:500-1:5000, IHC:1:20-1:200
Reactivity:	Mouse, Human
Host:	Rabbit
Isotype:	IgG
Clonality:	Polyclonal
Immunogen:	Recombinant Human Probable lysosomal cobalamin transporter protein (6-100AA)
Formulation:	Preservative: 0.03% Proclin 300 Constituents: 50% Glycerol, 0.01M PBS, PH 7.4
Concentration:	lot specific
Purification:	>95%, Protein G purified
Conjugation:	Unconjugated
Storage:	Upon receipt, store at -20°C or -80°C. Avoid repeated freeze.
Stability:	1 year from dispatch.
Database Link:	Q9NUN5
Background:	Probable lysosomal cobalamin transporter. Required to export cobalamin from lysosomes allowing its conversion to cofactors. Isoform 3 may play a role in the assembly of hepatitis delta virus (HDV).



[View online »](#)

Product images:

Immunohistochemistry of paraffin-embedded human brain tissue using TA387833 at dilution of 1:100



Western Blot
Positive WB detected in: Mouse liver tissue,
Mouse kidney tissue
All lanes: LMBRD1 antibody at 4 μ g/ml
Secondary
Goat polyclonal to rabbit IgG at 1/50000 dilution
Predicted band size: 62, 45, 54, 22 kDa
Observed band size: 62, 54 kDa