

## Product datasheet for **TA387831**

### CA10 Rabbit Polyclonal Antibody

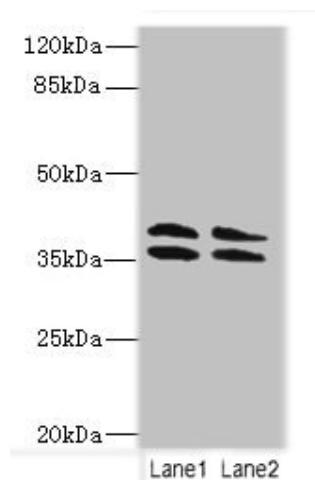
#### Product data:

|                       |  |
|-----------------------|--|
| Product Type:         | Primary Antibodies   |
| Applications:         | WB   |
| Recommended Dilution: | Recommended dilution: WB:1:500-1:2000  |
| Reactivity:           | Mouse, Human   |
| Host:                 | Rabbit   |
| Isotype:              | IgG  |
| Clonality:            | Polyclonal   |
| Immunogen:            | Recombinant Human CA10 protein (61-320AA)  |
| Formulation:          | Preservative: 0.03% Proclin 300<br>Constituents: 50% Glycerol, 0.01M PBS, PH 7.4 |
| Concentration:        | lot specific   |
| Purification:         | >95%, Protein G purified   |
| Conjugation:          | Unconjugated   |
| Storage:              | Upon receipt, store at -20°C or -80°C. Avoid repeated freeze.                    |
| Stability:            | 1 year from dispatch.  |
| Database Link:        | <a href="#">Q9NS85</a>   |
| Background:           | Does not have a catalytic activity.  |



[View online »](#)

## Product images:



Western blot

All lanes: CA10 antibody at 4 $\mu$ g/ml

Lane 1: HL60 whole cell lysate

Lane 2: Mouse brain tissue

Secondary

Goat polyclonal to rabbit IgG at 1/10000 dilution

Predicted band size: 38, 30 kDa

Observed band size: 38 kDa