

Product datasheet for **TA387826**

SH3GLB2 Rabbit Polyclonal Antibody

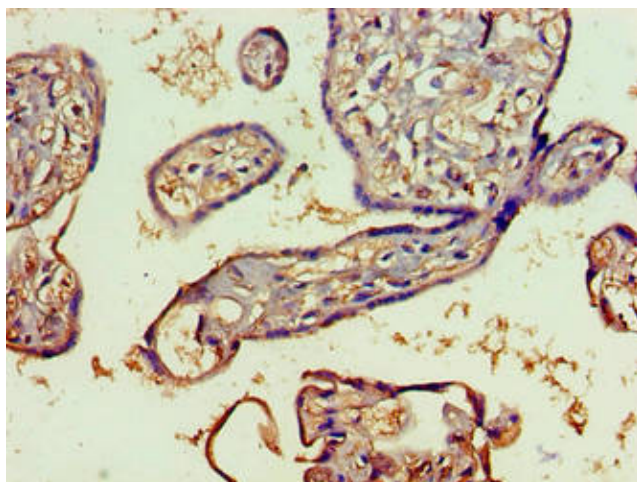
Product data:

Product Type:	Primary Antibodies
Applications:	IHC, WB
Recommended Dilution:	Recommended dilution: WB:1:1000-1:5000, IHC:1:20-1:200
Reactivity:	Mouse, Human
Host:	Rabbit
Isotype:	IgG
Clonality:	Polyclonal
Immunogen:	Recombinant Human Endophilin-B2 protein (1-395AA)
Formulation:	Preservative: 0.03% Proclin 300 Constituents: 50% Glycerol, 0.01M PBS, PH 7.4
Concentration:	lot specific
Purification:	>95%, Protein G purified
Conjugation:	Unconjugated
Storage:	Upon receipt, store at -20°C or -80°C. Avoid repeated freeze.
Stability:	1 year from dispatch.
Database Link:	Q9NR46

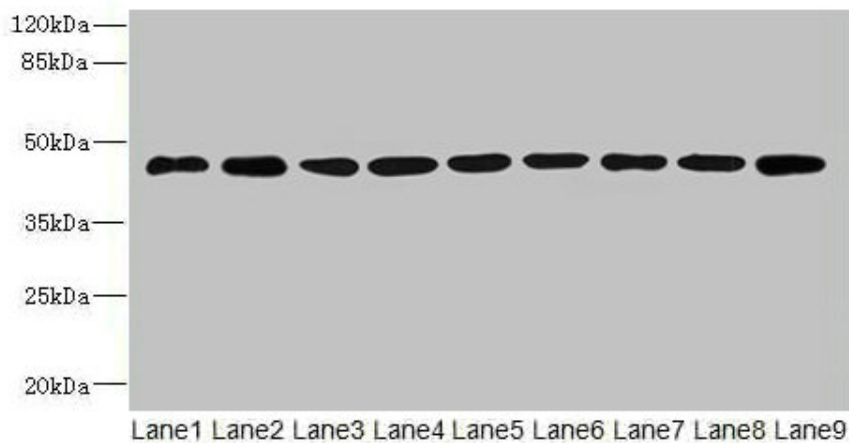


[View online »](#)

Product images:



Immunohistochemistry of paraffin-embedded human placenta tissue using TA387826 at dilution of 1:100



Western blot
 All lanes: SH3GLB2 antibody at 1µg/ml
 Lane 1: HeLa whole cell lysate
 Lane 2: Mouse gonadal tissue
 Lane 3: Mouse lung tissue
 Lane 4: U87 whole cell lysate
 Lane 5: THP-1 whole cell lysate
 Lane 6: A549 whole cell lysate
 Lane 7: MCF-7 whole cell lysate
 Lane 8: Mouse liver tissue
 Lane 9: A431 whole cell lysate
 Secondary
 Goat polyclonal to rabbit IgG at 1/10000 dilution
 Predicted band size: 44, 45 kDa
 Observed band size: 44 kDa