

Product datasheet for **TA387824M**

ANO2 Rabbit Polyclonal Antibody

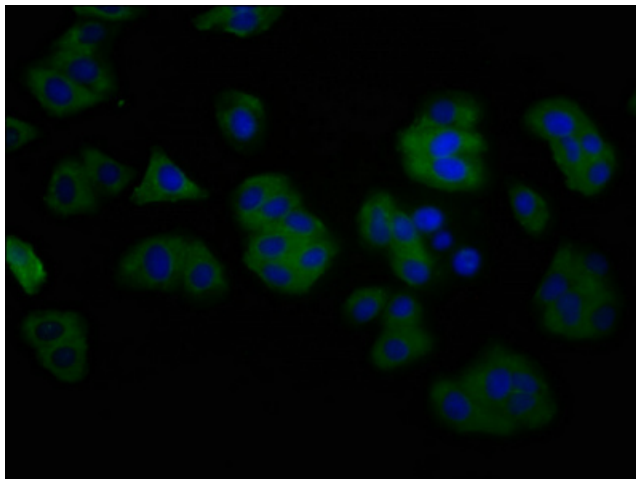
Product data:

Product Type:	Primary Antibodies
Applications:	IF, IHC, WB
Recommended Dilution:	Recommended dilution: WB:1:500-1:5000, IHC:1:500-1:1000, IF:1:200-1:500
Reactivity:	Rat, Human
Host:	Rabbit
Isotype:	IgG
Clonality:	Polyclonal
Immunogen:	Recombinant Human Anoctamin-2 protein (1-83AA)
Formulation:	Preservative: 0.03% Proclin 300 Constituents: 50% Glycerol, 0.01M PBS, pH 7.4
Concentration:	lot specific
Purification:	>95%, Protein G purified
Conjugation:	Unconjugated
Storage:	Upon receipt, store at -20°C or -80°C. Avoid repeated freeze.
Stability:	1 year from dispatch.
Database Link:	Q9NQ90
Background:	Calcium-activated chloride channel (CaCC) which may play a role in olfactory signal transduction. Odorant molecules bind to odor-sensing receptors (OSRs), leading to an increase in calcium entry that activates CaCC current which amplifies the depolarization of the OSR cells, ANO2 seems to be the underlying chloride channel involved in this process. May mediate light perception amplification in retina.

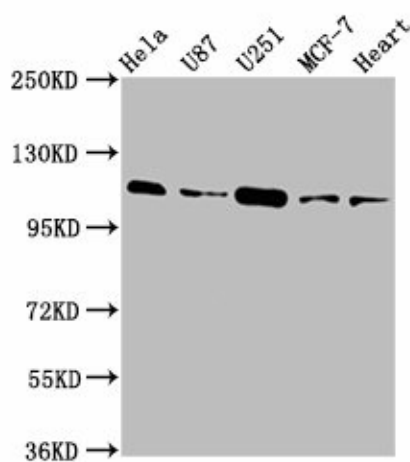


[View online »](#)

Product images:



Immunofluorescence staining of HepG2 cells with [TA387824] at 1:200, counter-stained with DAPI. The cells were fixed in 4% formaldehyde, permeabilized using 0.2% Triton X-100 and blocked in 10% normal Goat Serum. The cells were then incubated with the antibody overnight at 4°C. The secondary antibody was Alexa Fluor 488-conjugated AffiniPure Goat Anti-Rabbit IgG(H+L).



Western Blot

Positive WB detected in: HeLa whole cell lysate, U87 whole cell lysate, U251 whole cell lysate, MCF-7 whole cell lysate, Rat heart tissue

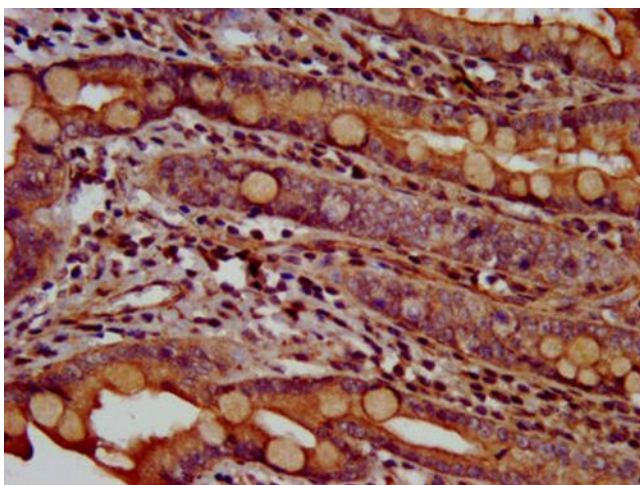
All lanes: ANO2 antibody at 3.9µg/ml

Secondary

Goat polyclonal to rabbit IgG at 1/50000 dilution

Predicted band size: 114 kDa

Observed band size: 114 kDa



IHC image of [TA387824] diluted at 1:600 and staining in paraffin-embedded human small intestine tissue performed on a Leica Bond™ system. After dewaxing and hydration, antigen retrieval was mediated by high pressure in a citrate buffer (pH 6.0). Section was blocked with 10% normal goat serum 30min at RT. Then primary antibody (1% BSA) was incubated at 4°C overnight. The primary is detected by a biotinylated secondary antibody and visualized using an HRP conjugated SP system.