

Product datasheet for **TA387823**

SCUBE2 Rabbit Polyclonal Antibody

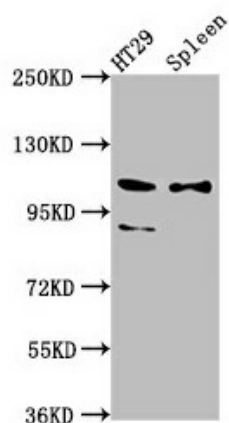
Product data:

Product Type:	Primary Antibodies
Applications:	IHC, WB
Recommended Dilution:	Recommended dilution: WB:1:500-1:5000, IHC:1:200-1:500
Reactivity:	Rat, Human
Host:	Rabbit
Isotype:	IgG
Clonality:	Polyclonal
Immunogen:	Recombinant Human Signal peptide, CUB and EGF-like domain-containing protein 2 protein (534-703AA)
Formulation:	Preservative: 0.03% Proclin 300 Constituents: 50% Glycerol, 0.01M PBS, pH 7.4
Concentration:	lot specific
Purification:	>95%, Protein G purified
Conjugation:	Unconjugated
Storage:	Upon receipt, store at -20°C or -80°C. Avoid repeated freeze.
Stability:	1 year from dispatch.
Database Link:	Q9NQ36
Background:	cell surface, extracellular region, extracellular space, cell differentiation, signal transduction



[View online »](#)

Product images:

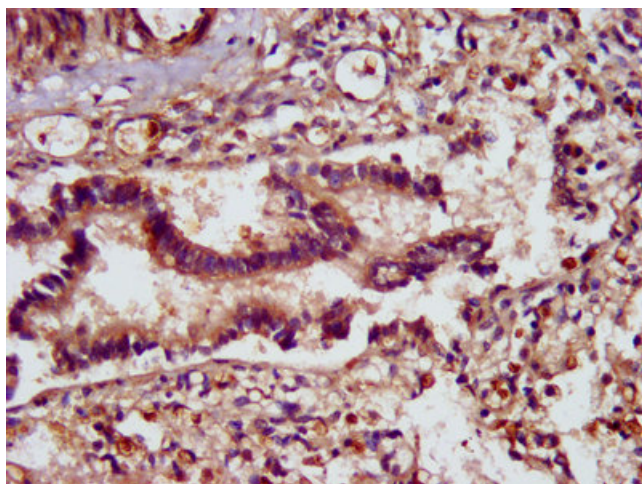


Western Blot

Positive WB detected in: HT29 whole cell lysate,
Rat spleen tissue

All lanes: SCUBE2 antibody at 8.7 μ g/ml
Secondary

Goat polyclonal to rabbit IgG at 1/50000 dilution
Predicted band size: 110, 107, 89 kDa
Observed band size: 110, 89 kDa



IHC image of TA387823 diluted at 1:400 and staining in paraffin-embedded human lung tissue performed on a Leica BondTM system. After dewaxing and hydration, antigen retrieval was mediated by high pressure in a citrate buffer (pH 6.0). Section was blocked with 10% normal goat serum 30min at RT. Then primary antibody (1% BSA) was incubated at 4 $^{\circ}$ C overnight. The primary is detected by a biotinylated secondary antibody and visualized using an HRP conjugated SP system.