

Product datasheet for **TA387821**

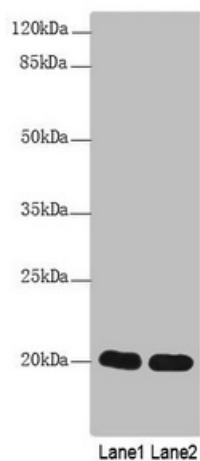
CABP5 Rabbit Polyclonal Antibody

Product data:

Product Type:	Primary Antibodies
Applications:	WB
Recommended Dilution:	Recommended dilution: WB:1:1000-1:5000
Reactivity:	Mouse, Human
Host:	Rabbit
Isotype:	IgG
Clonality:	Polyclonal
Immunogen:	Recombinant Human Calcium-binding protein 5 protein (1-173AA)
Formulation:	Preservative: 0.03% Proclin 300 Constituents: 50% Glycerol, 0.01M PBS, PH 7.4
Concentration:	lot specific
Purification:	>95%, Protein G purified
Conjugation:	Unconjugated
Storage:	Upon receipt, store at -20°C or -80°C. Avoid repeated freeze.
Stability:	1 year from dispatch.
Database Link:	Q9NP86
Background:	Inhibits calcium-dependent inactivation of L-type calcium channel and shifts voltage dependence of activation to more depolarized membrane potentials. Involved in the transmission of light signals.



[View online »](#)

Product images:

Western Blot

All lanes: CABP5 antibody at 12 μ g/ml

Lane 1: Mouse kidney tissue

Lane 2: Mouse thymus tissue

Secondary

Goat polyclonal to rabbit IgG at 1/10000 dilution

Predicted band size: 20 kDa

Observed band size: 20 kDa